



LEGEND

Site Boundary



CHALMERSTON WINDFARM
SCOPING REPORT
SITE LOCATION

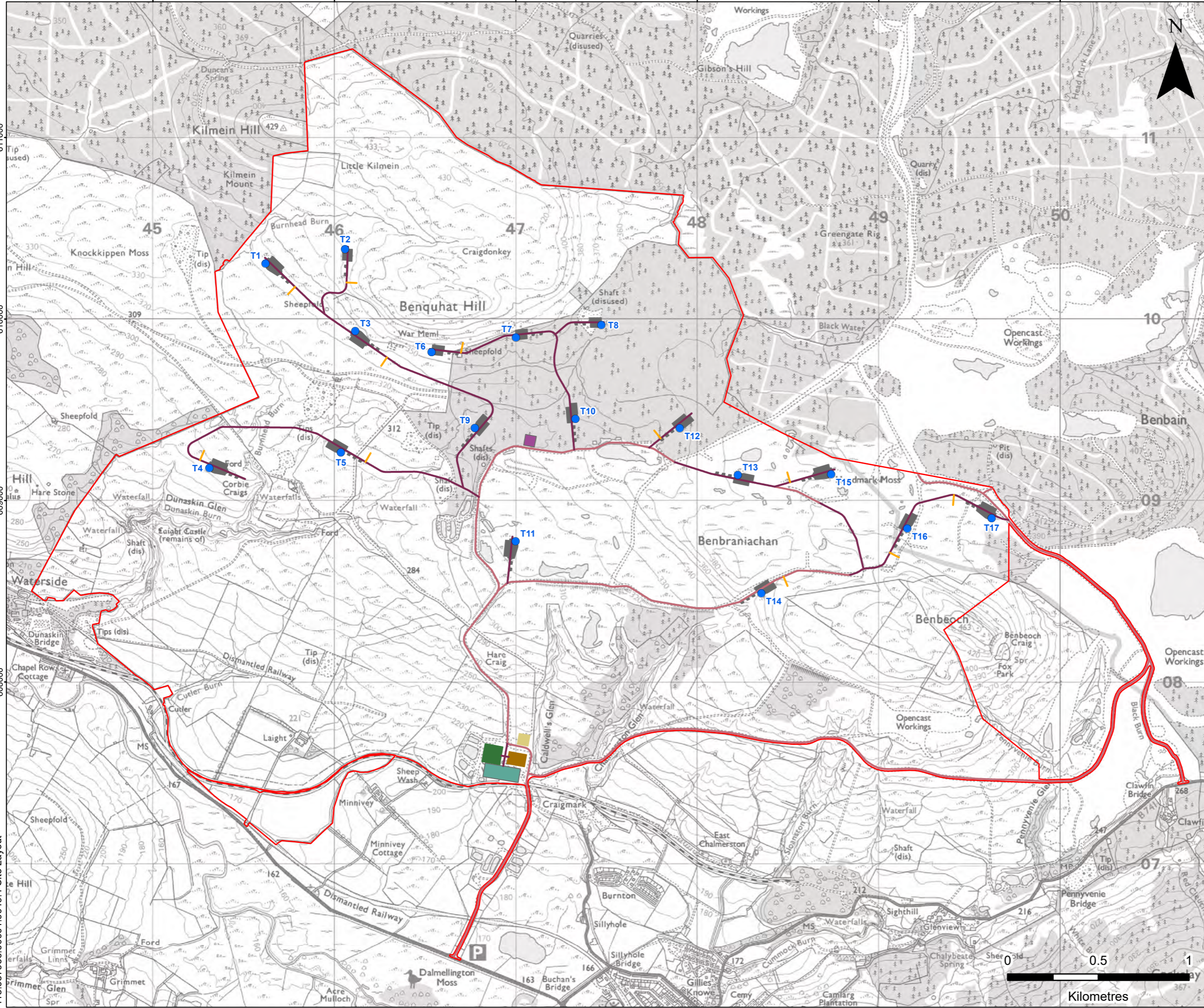
FIGURE 3.1

Scale 1:100,000 @ A3 Date MAY 2026

413.057966.0001.0018.0 Site Location

245000 246000 247000 248000 249000 250000

611000
610000
609000
608000
413.057966.0001.0019.1 Site Layout

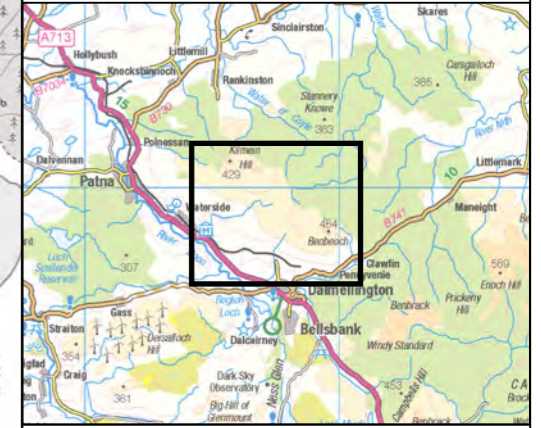


LEGEND

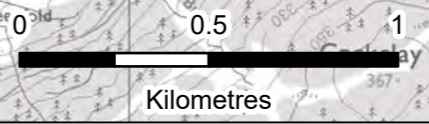
- Site Boundary
- Proposed Turbine Location

Type

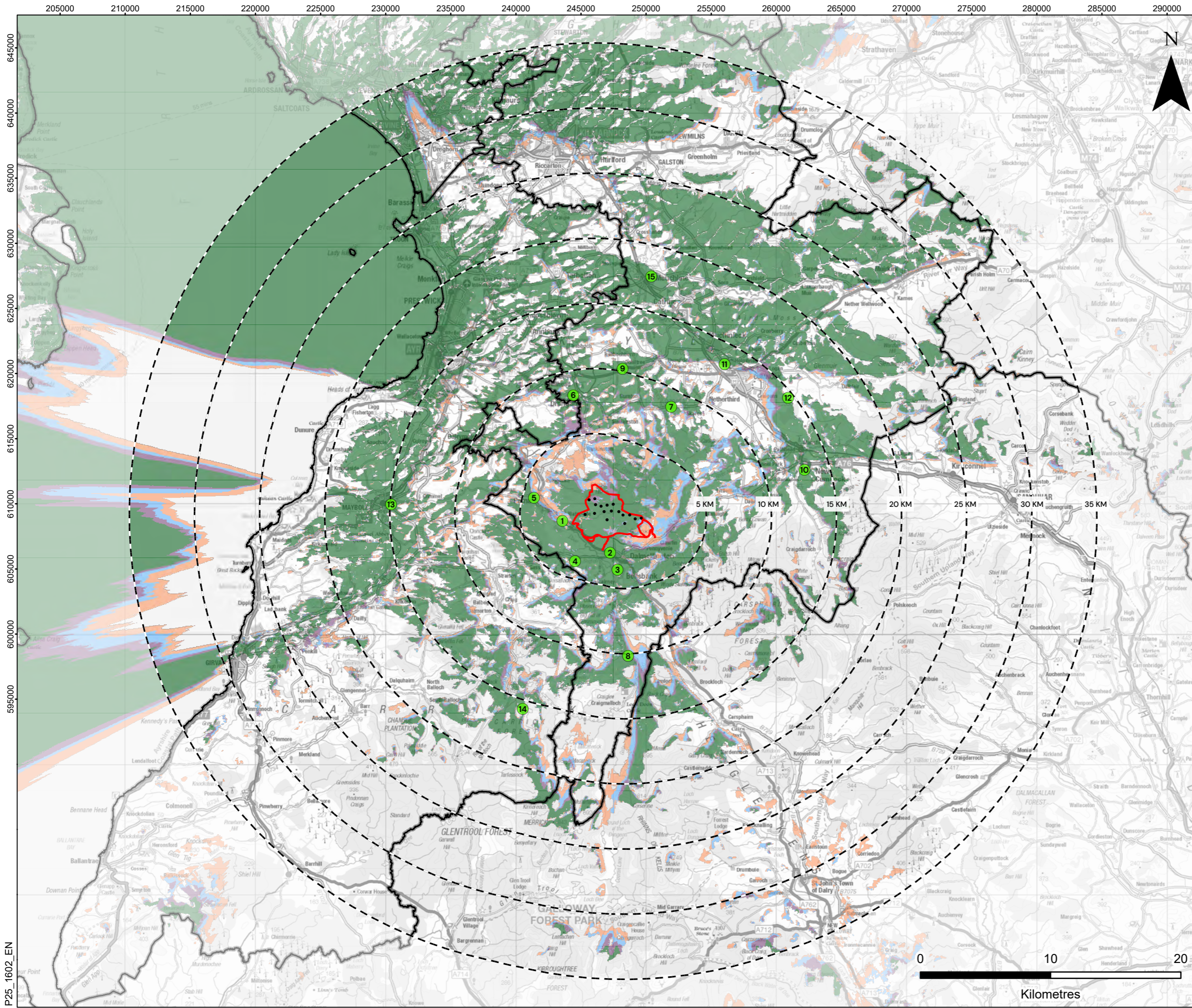
- Existing Access Track
- Proposed Access Track
- Proposed Turning Head
- Proposed Substation
- Proposed Substation Construction Compound
- Proposed Temporary Construction Compound
- Proposed Hardstanding
- Proposed Satellite Construction Compound
- Proposed BESS



CHALMERSTON WINDFARM
SCOPING REPORT
SITE LAYOUT
FIGURE 3.2



Scale 1:20,000 @ A3 Date MAY 2026

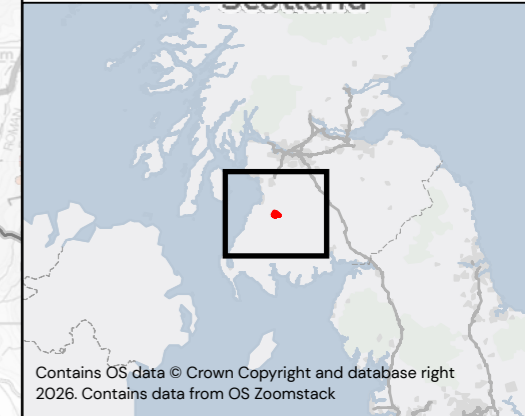


LEGEND

- Application Boundary
- Proposed Turbines
- Study Area 35km
- Local Authority Boundary
- Scoping Viewpoints

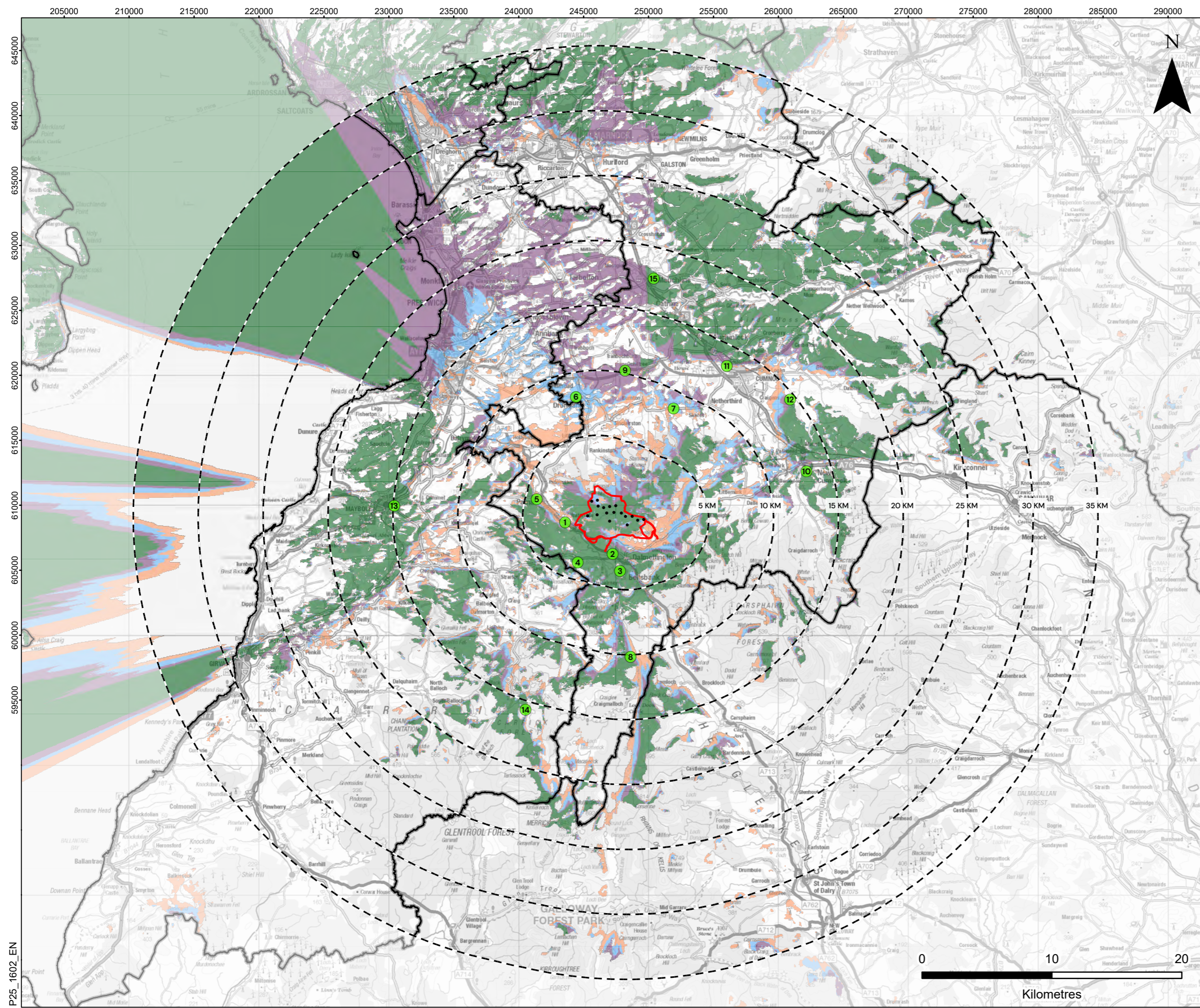
Blade Tip Zone of Theoretical Visibility (149.9m and 200m)

- 1 to 4 turbines visible
- 5 to 8 turbines visible
- 9 to 12 turbines visible
- 13 to 17 turbines visible



CHALMERSTON ENERGY PROJECT
SCOPING REPORT
BLADE TIP ZTV WITH VIEWPOINTS
(35KM RADIUS)
FIGURE 4.1

Scale 1:275,000 @ A3 Date APRIL 2026



LEGEND

- Application Boundary
- Proposed Turbines
- Study Area 35km
- Local Authority Boundary
- Scoping Viewpoints

Hub Height Zone of Theoretical Visibility (82m and 119m)

- 1 to 4 hubs visible
- 5 to 8 hubs visible
- 9 to 12 hubs visible
- 13 to 17 hubs visible

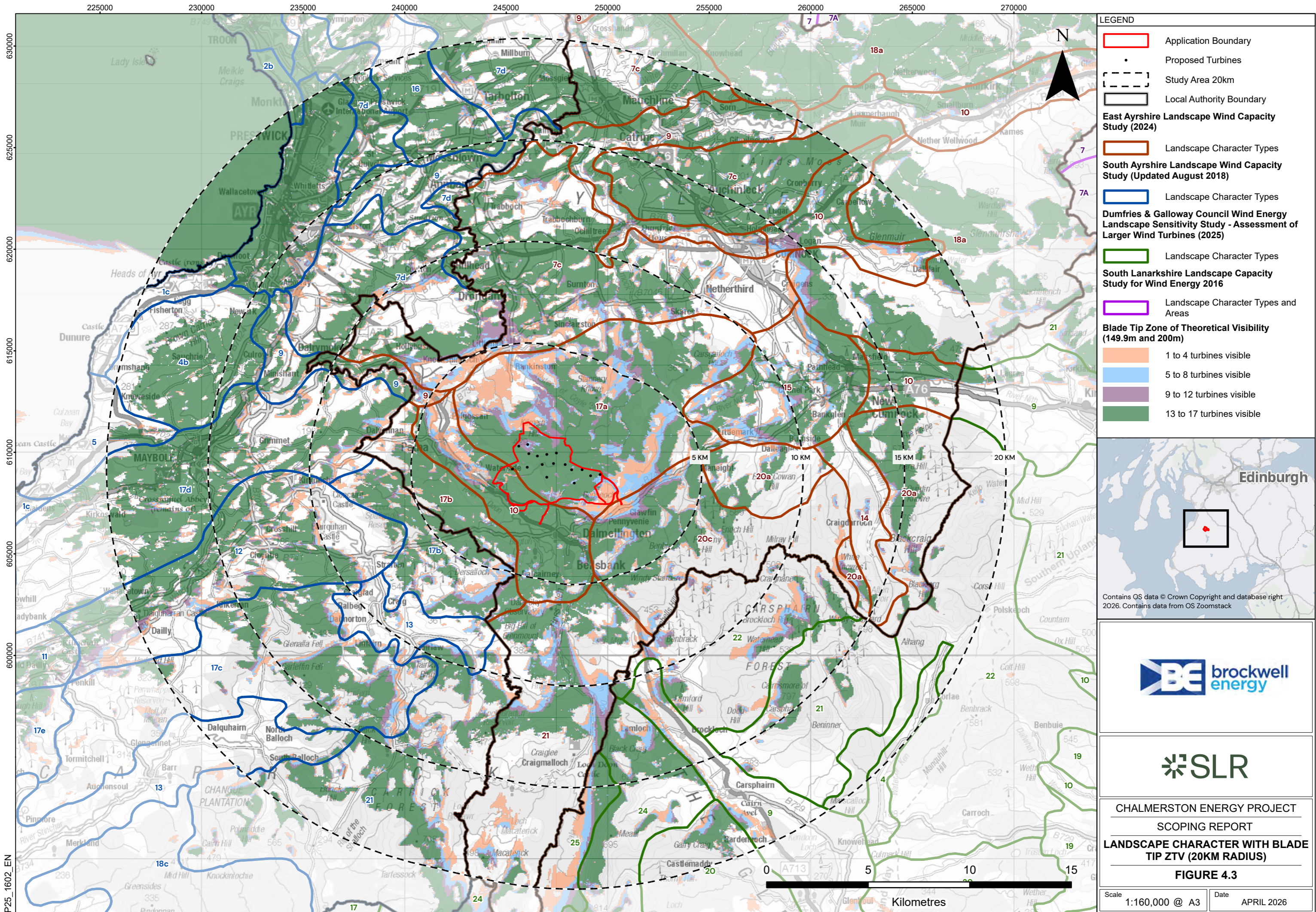
Contains OS data © Crown Copyright and database right 2026. Contains data from OS Zoomstack



CHALMERSTON ENERGY PROJECT
SCOPING REPORT
HUB HEIGHT ZTV WITH VIEWPOINTS
(35KM RADIUS)

FIGURE 4.2

Scale 1:275,000 @ A3 Date APRIL 2026



LEGEND

- Application Boundary
- Proposed Turbines
- Study Area 20km
- Local Authority Boundary

East Ayrshire Landscape Wind Capacity Study (2024)

- Landscape Character Types

South Ayrshire Landscape Wind Capacity Study (Updated August 2018)

- Landscape Character Types

Dumfries & Galloway Council Wind Energy Landscape Sensitivity Study - Assessment of Larger Wind Turbines (2025)

- Landscape Character Types

South Lanarkshire Landscape Capacity Study for Wind Energy 2016

- Landscape Character Types and Areas

Blade Tip Zone of Theoretical Visibility (149.9m and 200m)

- 1 to 4 turbines visible
- 5 to 8 turbines visible
- 9 to 12 turbines visible
- 13 to 17 turbines visible

Edinburgh

Contains OS data © Crown Copyright and database right 2026. Contains data from OS Zoomstack

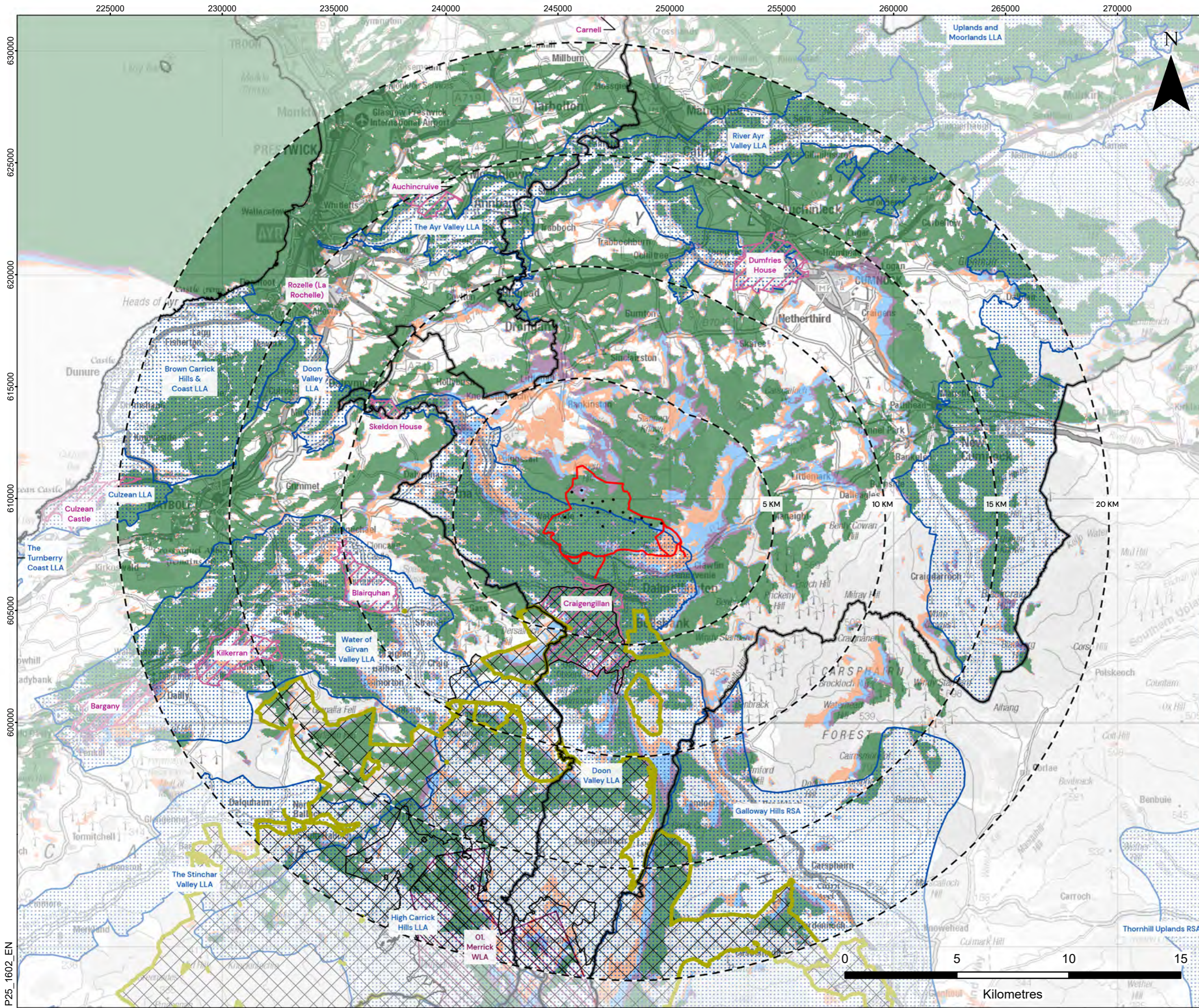
brockwell energy

SLR

CHALMERSTON ENERGY PROJECT
SCOPING REPORT
LANDSCAPE CHARACTER WITH BLADE TIP ZTV (20KM RADIUS)

FIGURE 4.3

Scale: 1:160,000 @ A3 Date: APRIL 2026



LEGEND

- Application Boundary
- Proposed Turbines
- Study Area 20km
- Local Authority Boundary

Landscape Designations

- Local Landscape Areas / Regional Scenic Areas (Dumfries and Galloway)
- Gardens and Designed Landscapes
- Wild Land Areas (WLA)
- Galloway Forest Park
- Galloway Dark Skies Park

Blade Tip Zone of Theoretical Visibility (149.9m and 200m)

- 1 to 4 turbines visible
- 5 to 8 turbines visible
- 9 to 12 turbines visible
- 13 to 17 turbines visible

Edinburgh

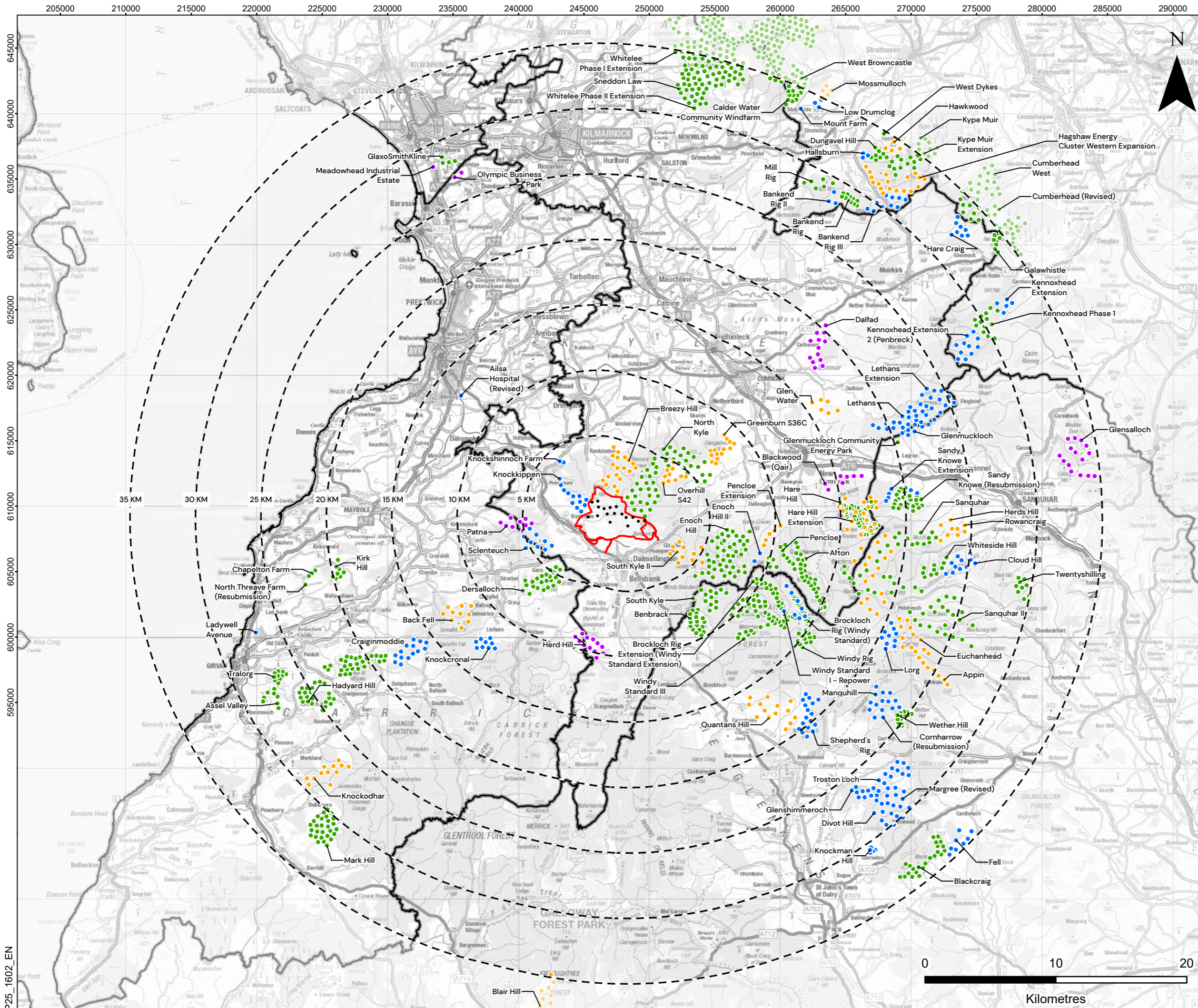
Contains OS data © Crown Copyright and database right 2026. Contains data from OS Zoomstack, South Ayrshire Council, HES, © NatureScot. Contains Ordnance Survey data © Crown copyright and database right (year)

brockwell energy

SLR

CHALMERSTON ENERGY PROJECT
 SCOPING REPORT
 LANDSCAPE DESIGNATIONS WITH
 BLADE TIP ZTV (20KM RADIUS)
FIGURE 4.4

Scale 1:160,000 @ A3 Date APRIL 2026



LEGEND

- Application Boundary
- Proposed Turbines
- Study Area 35km
- Local Authority Boundary

Other Wind Farms

- Operational; Under construction
- Consented
- In planning
- Scoping

Contains OS data © Crown Copyright and database right 2026. Contains data from OS Zoomstack

CHALMERSTON ENERGY PROJECT
SCOPING REPORT
CUMULATIVE WIND FARMS
(35KM RADIUS)
FIGURE 4.5

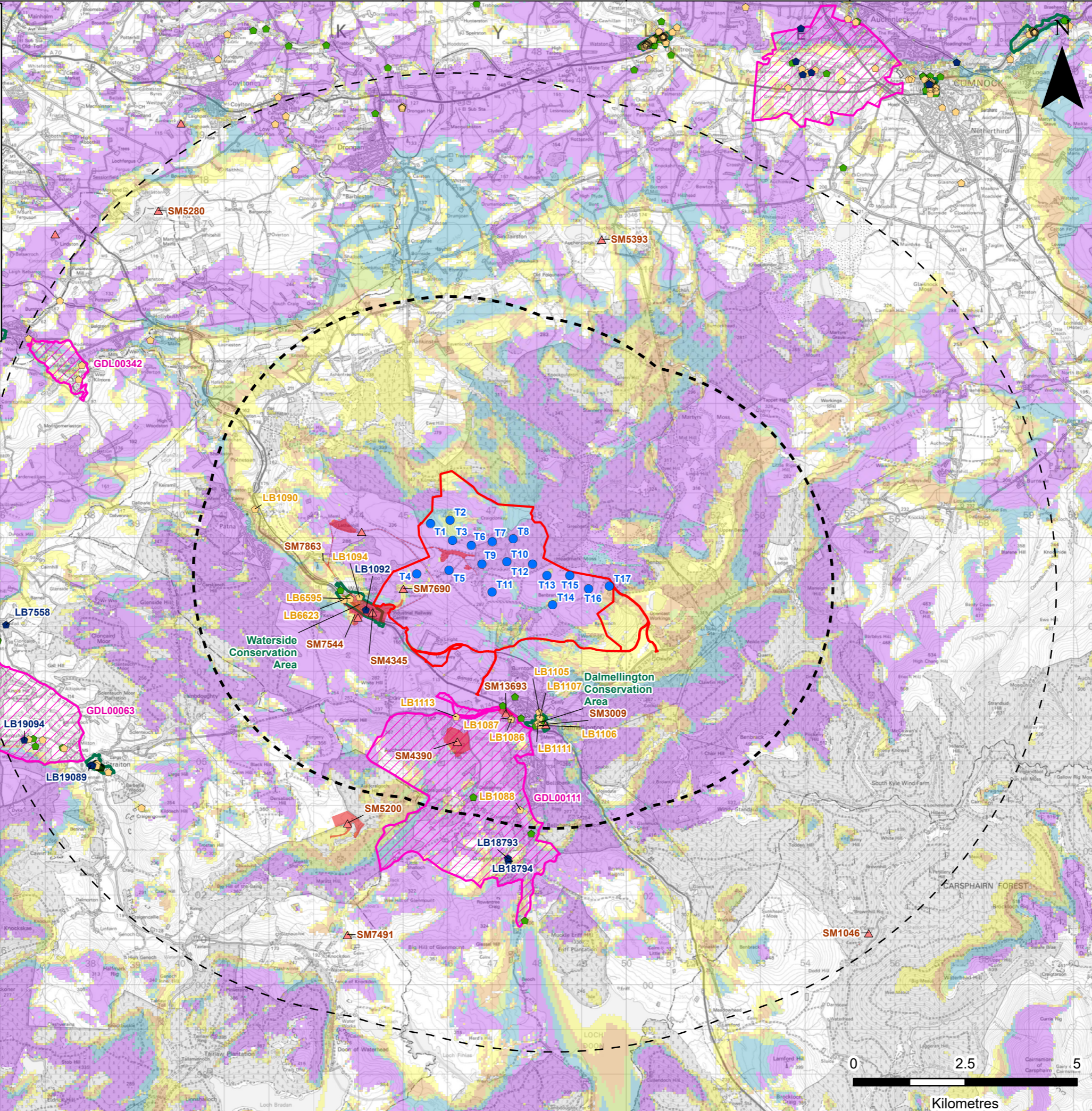
Scale: 1:275,000 @ A3 Date: APRIL 2026

Note

This Zone of Theoretical Visibility (ZTV) has been generated using ESRI ArcGIS Spatial Analyst extension. The digital terrain model (DTM) has been derived from OS Terrain 50 dataset (+/-10m). Earth curvature has been included in the ZTV calculation and refraction of light has been applied using SNH guidance settings. The ZTV has been generated from a viewing height of 2 m above ground level which falls within recommendations by "Visual Representation of Windfarms" prepared for NatureScot February 2017 - Version 2.2.

The use of ZTV mapping at this stage is limited and the following assumptions should be noted:

- The ZTV has been generated using the proposed turbine locations for Chalmers Wind Farm.
- The proposed turbine blade tip height is 149.9m for turbines 2, 6, 7 and 8 and 200 m for the remaining turbines.
- The ZTV is generated from a bare earth terrain and does not account for the screening effect of features within the landscape such as settlements and woodland. It does not indicate potential visual effects or show the likely significance of effects. It shows potential theoretical visibility only. The ZTV has been produced for the purpose of informing 'on the ground' visual assessment.



LEGEND

- Site Boundary
- Proposed Turbine Location
- Proposed Turbine Location 5 km Buffer
- Proposed Turbine Location 10 km Buffer

Listed Building (Category)

- A
- B
- C
- Scheduled Monument (Centre Point)
- Scheduled Monument
- Conservation Area
- Inventory Garden and Designed Landscape

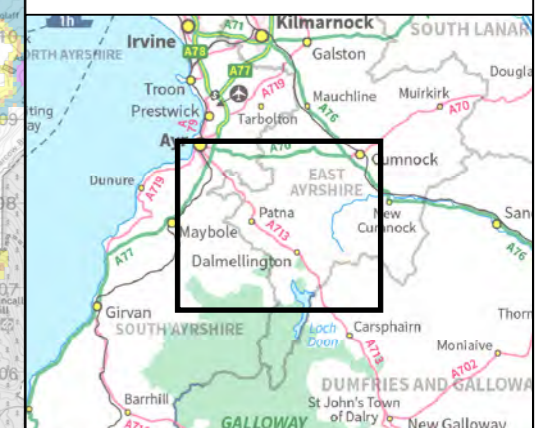
Blade Tip Zone of Theoretical Visibility (ZTV) Bare Earth

Number of Blade Tips Theoretically Visible

- 1 - 4
- 5 - 7
- 8 - 10
- 11 - 14
- 14 - 17

Note

Designations are only labelled within the proposed turbine locations 10 km buffer. Category A Listed Buildings are labelled out to the 10 km buffer. Category B Listed Buildings are labelled out to the 5 km buffer.



BE brockwell energy

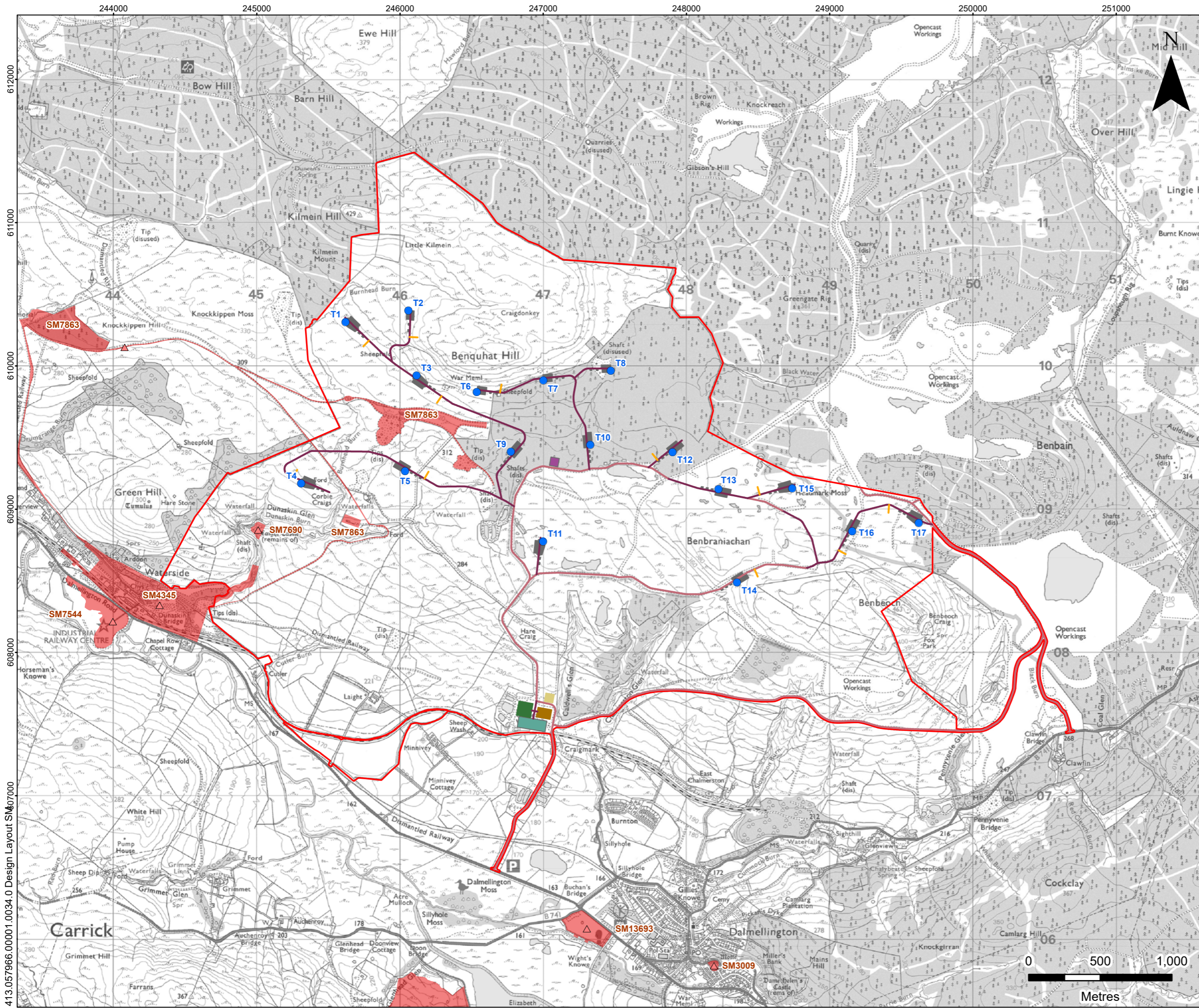
SLR

CHALMERSTON WINDFARM
SCOPING REPORT
CULTURAL HERITAGE ASSETS

FIGURE 5.1

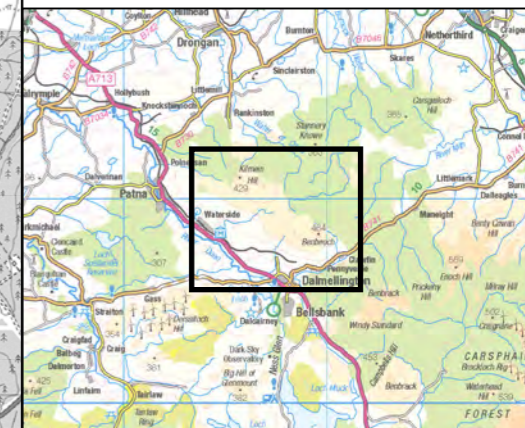
Scale 1:90,000 @ A3 Date MAY 2026

413.057966.0001.0027.0 Cultural Heritage



LEGEND

- Site Boundary
- Proposed Turbine Location
- Proposed Turning Head
- Existing Access Track
- Proposed Access Track
- Proposed Substation
- Proposed Substation Construction Compound
- Proposed Temporary Construction Compound
- Proposed Hardstanding
- Proposed Satellite Construction Compound
- Proposed BESS
- ▲ Scheduled Monument (Centre Point)
- Scheduled Monument



CHALMERSTON WINDFARM
SCOPING REPORT
DESIGNATED CULTURAL HERITAGE
ASSETS WITHIN SITE

FIGURE 5.2

Scale 1:25,000 @ A3 Date MAY 2026

4113.057966.0001.0034.0 Design Layout SM607000