

Dalfad Windfarm Visioning Proposal



bright

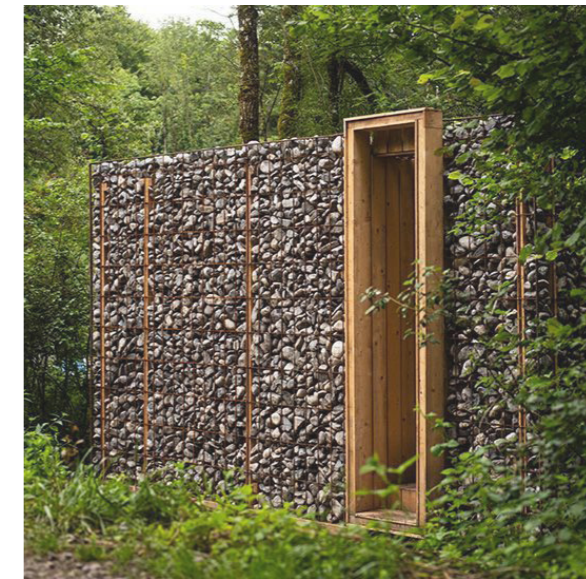
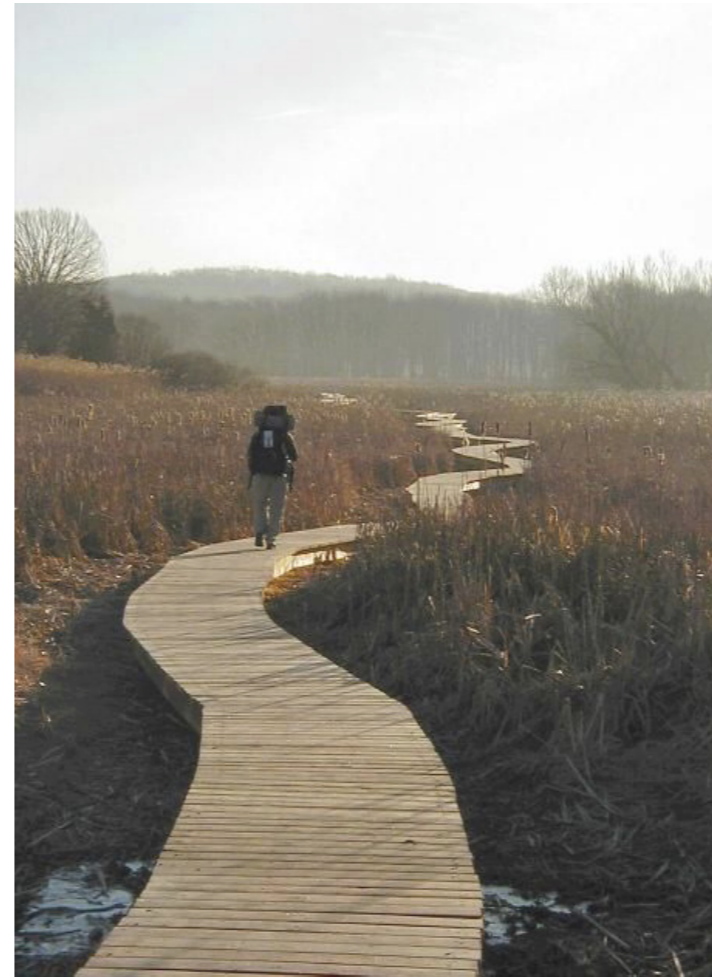
The Project Vision

Transforming a Former Opencast Site into a Landmark for Nature, Renewable Energy and Community Connection.

Immediately adjacent to the A70, the site forms the gateway to an ambitious regeneration and rewilding project. Driven by significant investment in the development of a wind farm, the initiative will deliver environmental benefits and enhanced energy security while restoring a former opencast coal site and transforming it into a diverse, sustainable habitat for wildlife.

A comprehensive programme of regeneration and restoration will establish new habitats and support the reintroduction of native species. Alongside this, a network of walking and cycling routes with shelters, viewpoints, interpretive elements will provide an engaging visitor experience that celebrates the site's natural and industrial heritage. Built from durable, natural materials suited to the exposed setting, these structures will integrate seamlessly into the landscape.

These enhancements will establish the site as a destination for walkers and cyclists, with potential to contribute to a wider driving route and a connected regional experience linking local communities.



The Landscape

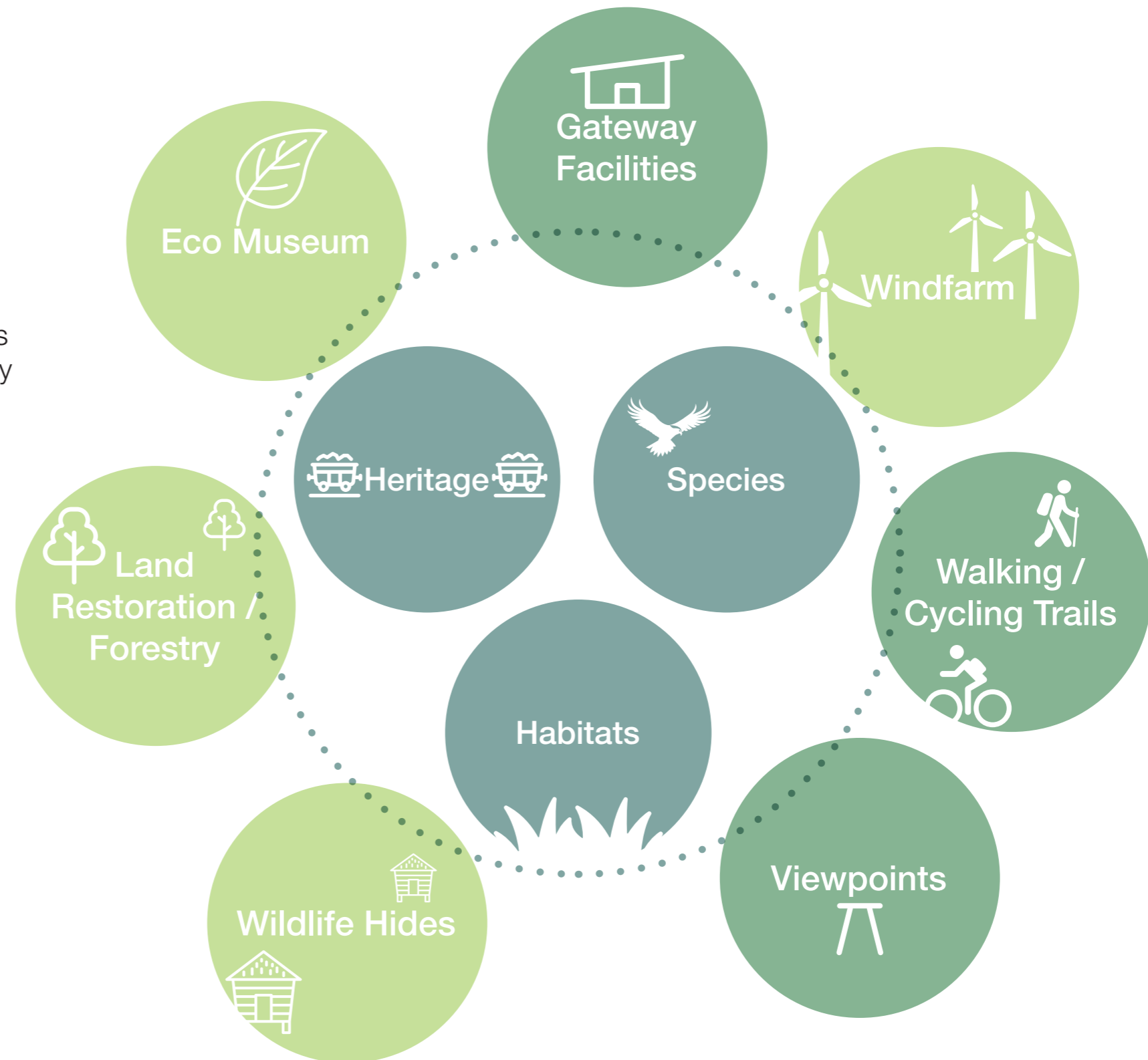
Connecting heritage, nature, and visitor experiences across the regenerated landscape.

The Dalfad landscape is in many ways a blank canvas. As a legacy of the open cast mining, the overall topology and environmental features are there to be developed into a rich variety of habitats and natural environments to suit the vision of a fully restored and attractive landscape.

At the heart of that development is the creation of wildlife habitats that will, over the years provide food, shelter and a breeding grounds for a wealth of flora and fauna. In addition, there is an opportunity to tell the story of the industrial heritage and reveal the stories that have shaped this part of Ayrshire.

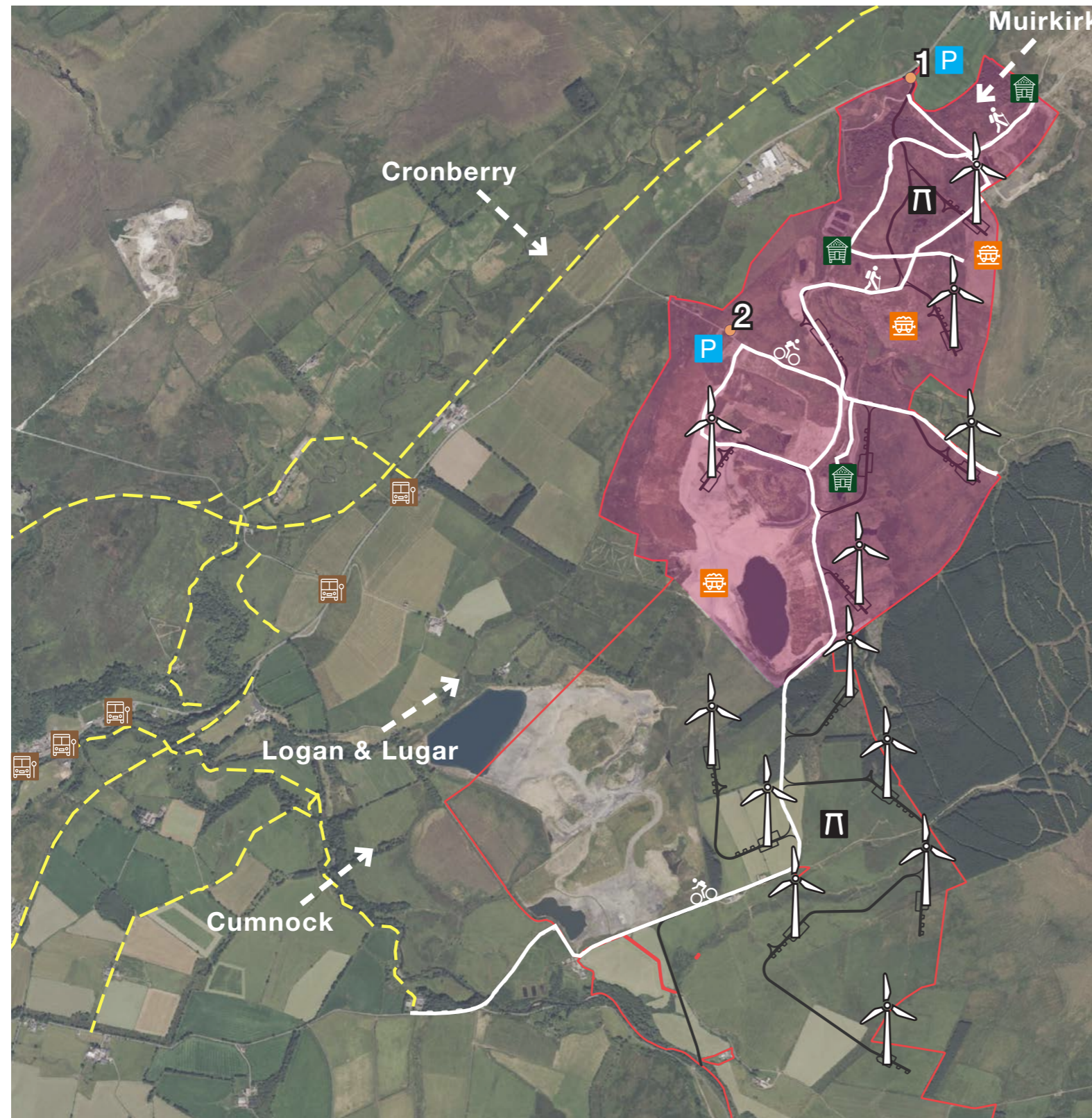
The visitor experience will be enhanced by a variety of facilities that will include :

- Network of cycling and walking trails
- Wildlife hides
- Shelter and viewpoints
- Interpretation media and sculptural features
- Parking and orientation hub













Understanding The Site

Dalfad Windfarm Development



KEY

- Site Boundary of Windfarm Development
- Rights of Way
- Walking / Cycling Trails
- Local Community Access
- Old Dalfad Mining Site

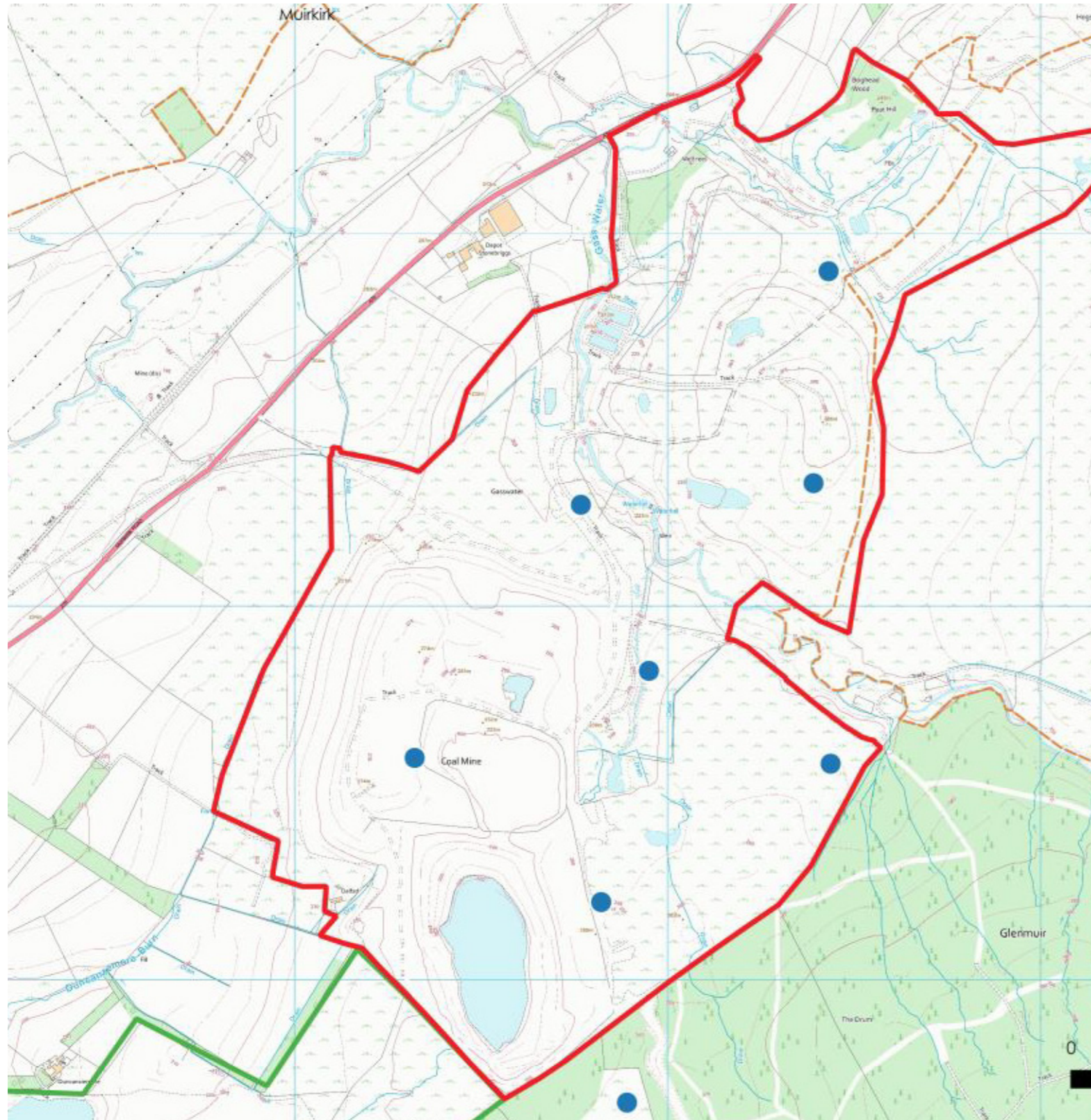
-  Wind Turbine
-  Bus Stop
-  Parking
-  Walking Trails
-  Cycle Trails
-  Bird Hide
-  Industrial Heritage
-  Shelters
-  Entrance Gateway
-  Entrance Gateway

Locations are indicative at this stage

The site's topology provides a varied landscape with significant viewpoints and a vistas. A network of access roads are already well established along with a number of historical routes traversing the site. There are a number of water bodies and small areas of natural woodland on the perimeter of the site. Currently there is substantial works going on to "resoil" the ground to allow for planting and natural regeneration. The site already supports a variety of wildlife.

Understanding The Site

Dalfad Mining Site



A diverse and evolving landscape, rich in wildlife, history, and panoramic views.

Dalfad is a former opencast mining site, shaped by decades of industrial extraction that left behind a vast and heavily scarred landscape.

Through careful restoration and regeneration, worked and degraded land is being re-soiled, re-shaped and re-planted, allowing nature to reclaim the site and new habitats to emerge.

Alongside this ecological recovery, Dalfad is being reimagined as a place for people. The evolving landscape will welcome visitors and local communities, providing opportunities to walk, cycle and spend time immersed in nature, while experiencing the wind farm as an integral part of the site's identity.

5 Different Habitats

Naturally Compliant



The aim is to ensure that the wind farm is not only a source of renewable energy but also a focal point for environmental awareness, learning, and community involvement.

By creating opportunities for people to interact with the natural environment surrounding the site, these initiatives will strengthen the connection between clean energy generation and biodiversity conservation.

The purpose of these initiatives is to deliver lasting benefits to local communities while supporting Brockwell's sustainability goals. They are intended to foster a sense of ownership and pride in renewable energy projects, demonstrating how clean energy and ecological stewardship can coexist harmoniously. Through carefully planned activities and features, Dalfad can become a space where education, recreation, and conservation intersect.



Habitat	Species
Bog	Skylark, Short-eared owl, Curlew, Purple moor-grass, Cottongrass
Wetland & Scrapes	Lapwing, Snipe, Common sandpiper, Greylag goose, Grasshopper warbler, Reed bunting, Marsh orchid
Grassland & Scrub	Willow warbler, Song thrush, Lesser whitethroat, Swift, Stoat
Rivers & Ponds	Dipper, Otter, Goosander, Kingfisher
Broad-leaved Woodland	Jay, Red fox, Great-spotted woodpecker, Buzzard, Treecreeper, Tawny owl, Spotted flycatcher, Badger



Entrance Gateway



At the entrance to the site, we propose a built area where visitors can gather and orient themselves before exploring. This could include an introductory panel with information about the site and a map of trails and key features. Adjacent to this, car parking and secure bike parking facilities would provide convenient access for all users.

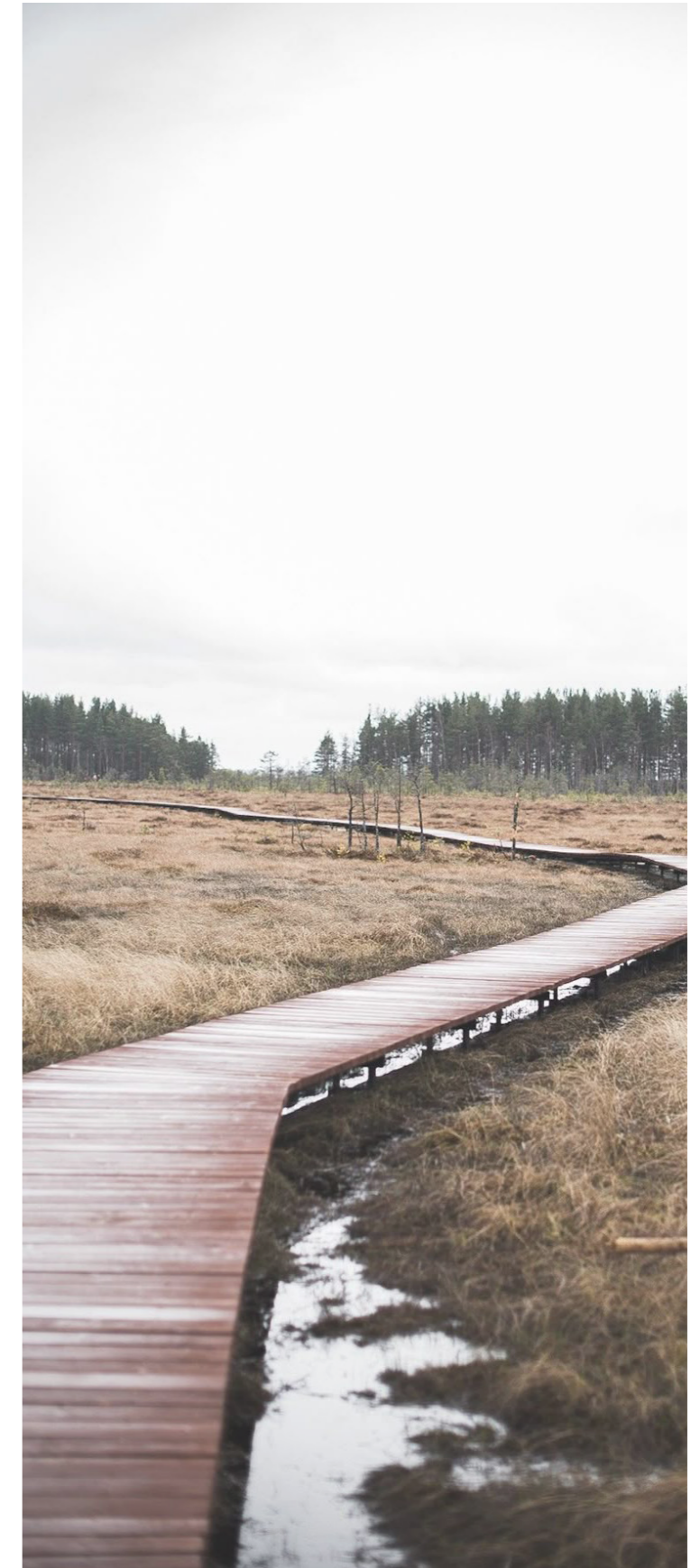


Cycling / Walking Trails



A network of walking and cycling routes would allow visitors to explore the site at their own pace, experiencing its open character while engaging with its layered stories. Trails could be designed to highlight the history of the land, from its industrial past to ongoing regeneration efforts, while providing close encounters with recovering habitats and species.

Strategic viewpoints could also frame the wind turbines on the horizon, helping visitors connect the site's ecological renewal with sustainable energy and the wider landscape, creating a journey that is both active and reflective.



Interpretive Elements



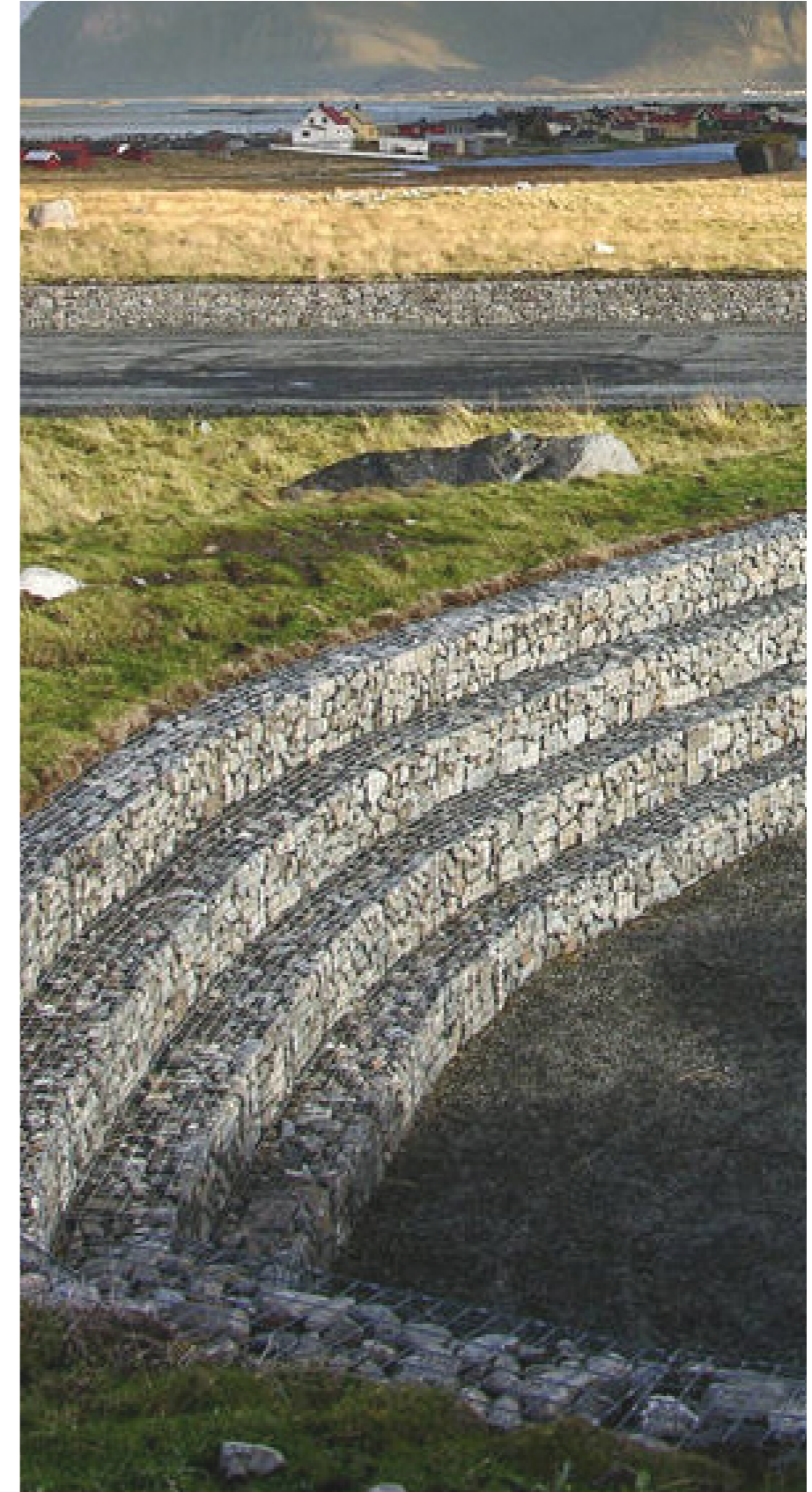
These images illustrate the mood and atmosphere we hope to create through interpretation across the site. They show how visitors might experience the landscape, engage with its history, witness the ongoing regeneration, and connect with its wildlife, habitats, and the surrounding sustainable energy infrastructure.

Shelters / Viewpoints

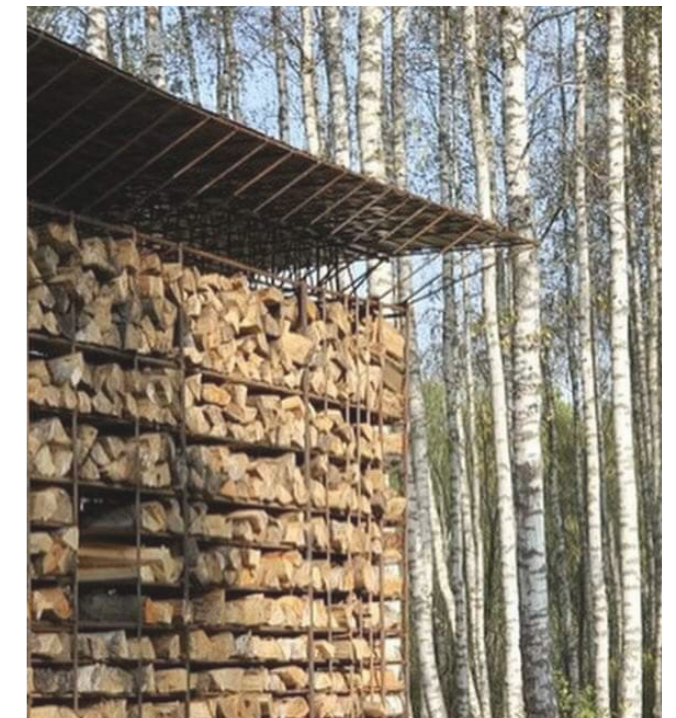


We propose a series of carefully designed architectural stopping points, providing shelter from the exposed landscape for both walkers and cyclists. These structures would act as moments of pause along the routes, with clear wayfinding guiding visitors to them and interpretation focused on views out across the wider site.

Interpretation at these stopping points would help visitors understand the landscape they are moving through. Content would explore the site's land history and former industrial uses, the ongoing programme of regeneration and wind farm development, and the longer-term vision for its future.



Shelters / Viewpoints



Materiality and durability are fundamental to the proposed interventions. Stone and timber are selected as primary materials for their robustness, weathering qualities, and deep association with local vernacular traditions such as dry-stone dykes and field structures.

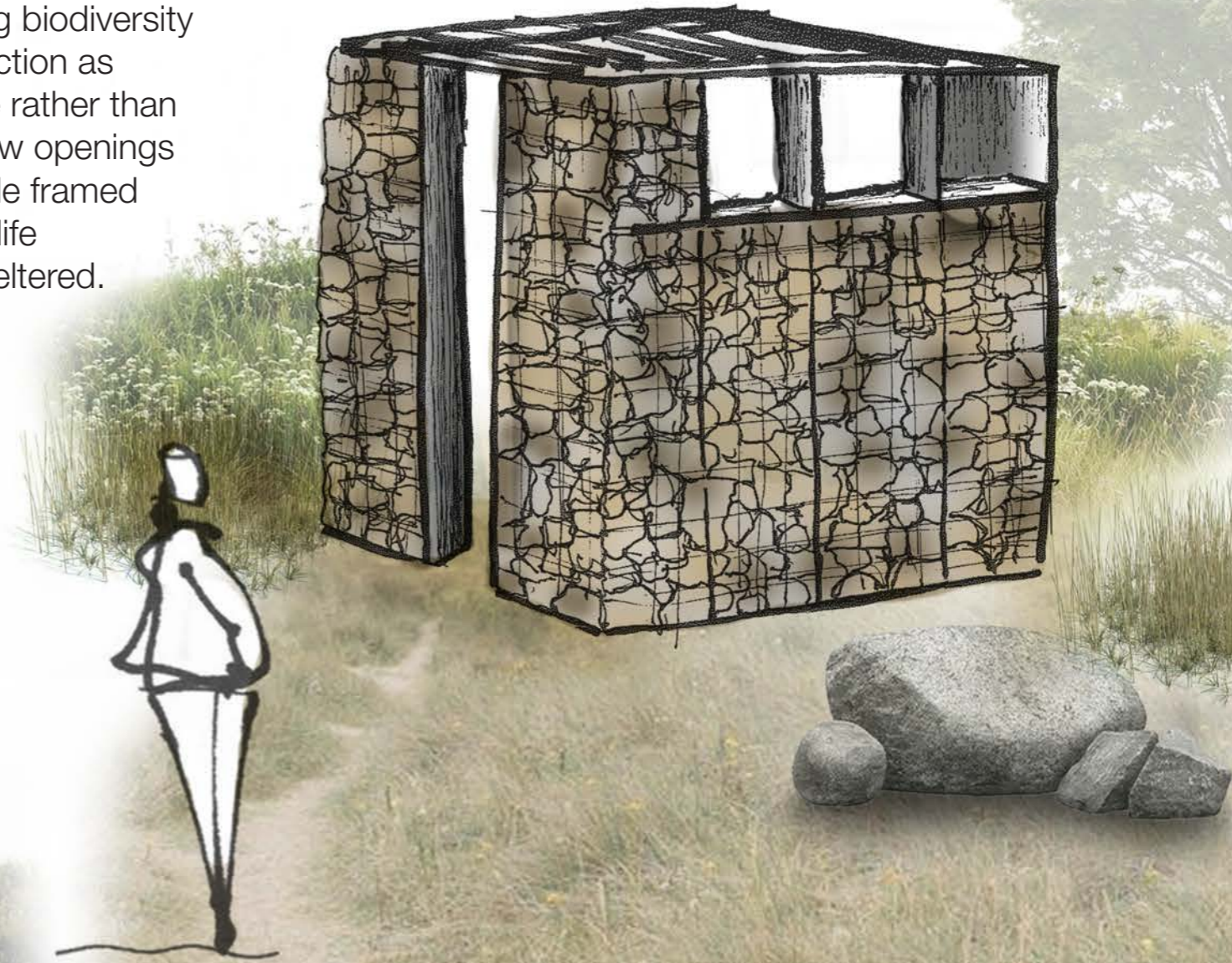
These materials allow the shelters, hides, and wayfinding elements to read as integral parts of the landscape rather than imposed objects.

Over time, stone and timber will weather and age in response to the climate, reinforcing a sense of permanence and authenticity while minimising long-term maintenance and visual impact.

Shelters / Viewpoints

Stone from the land is proposed as a key construction material with a contemporary spin on traditional dry-stone dyke construction. Stone will be contained within metal gabion baskets, allowing the structures to maintain the visual language of dry-stone walls while benefiting from enhanced structural stability and longevity. Largely maintenance-free structures that weather naturally and blend into their surroundings over time.

The stonework allows wildlife to inhabit the cavities and crevices, supporting biodiversity and enabling the shelters to function as living elements of the landscape rather than imposed objects. Slotted window openings are carefully integrated to provide framed views for interpretation and wildlife observation, while remaining sheltered.



Shelters / Viewpoints

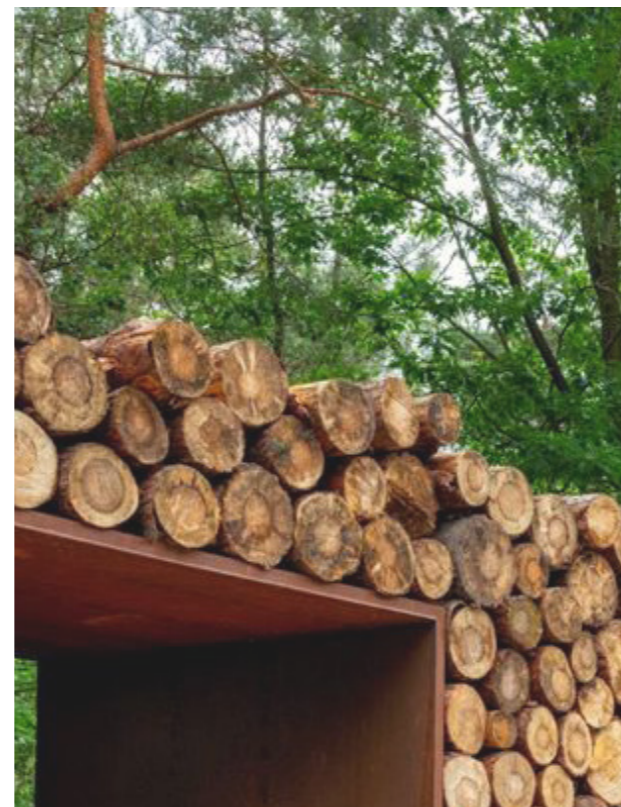


This option considers shelters formed from stacked timber logs arranged around simple metal-framed apertures, with integrated seating and interpretive elements.

The log construction intentionally has gaps and voids between the logs, creating shelter for insects and other small species and supporting biodiversity similar to that of a bug hotel.

Over time, the timber will weather naturally, enabling the structures to soften visually and integrate more fully with the surrounding landscape while remaining robust and low maintenance.

Engaging with Nature



Interpretation could be woven along the trail network to highlight the site's habitats, species and ongoing ecological recovery. Information would encourage visitors to look more closely at their surroundings, notice seasonal change and understand the landscape as a living, evolving system.

Along the routes, there would be opportunities to introduce carefully designed built elements that support both public use and nature, such as bird hides and insect and bug hotels as well as any other habitats raised by Naturally compliant.



Appendix



EcoMuseums

A museum without walls

**Heritage is lived and experienced in situ,
not extracted and isolated.**

What is an Eco Museum?

The philosophy behind Eco Museums (or Écomusées, a concept that originated in France in the 1970s) is rooted in community engagement, sustainability, and the holistic preservation of local heritage — both cultural and natural. Unlike traditional museums that collect and display objects in centralized buildings, Eco Museums aim to preserve and interpret the identity of a place through its landscapes, people, traditions, and environment.

An Eco Museum is not confined to a building. It extends across a territory — villages, natural sites, farms, workshops — and includes everything that contributes to the local identity. The landscape itself becomes the exhibit.

Heritage belongs to the people who live it. The local community is not a passive audience but an active participant — curator, guide, and co-owner of the museum. Residents decide what is meaningful, how it's preserved, and how it's shared.

Eco Museums are processes, not static institutions. They evolve as the community and environment change.



They emphasize interpretation rather than mere exhibition — helping visitors understand the relationships between people, place, and time.

Eco Museums promote sustainable development by connecting heritage conservation with local economic activities — such as eco-tourism, local crafts, and agriculture — ensuring long-term viability.

Eco Museums integrate natural, cultural, tangible, and intangible heritage — from ecology and architecture to crafts, language, and local customs.

Community Engagement

Examples from previous Biosphere Project

QUESTION 1

What do you feel is special about St John's Town of Dalry?



QUESTION 2

What do you feel is special about the site of the Biosphere hub?



QUESTION 3

Do you currently use the site? If yes, what do you use it for / how do you use it?



Precedent images illustrate the types of questions used to engage the community during the early stages of a Biosphere project in Ayrshire.

QUESTION 6

What would you like to find out about the Biosphere?



QUESTION 4

What specific amenities would you like to see on the site?



QUESTION 7

How do you think the Biosphere hub can support people and nature in St John's Town of Dalry?



There is an opportunity to involve the local community more closely in shaping how the site is used and experienced. Engaging early with residents, schools and local groups would help identify what people value and what they would like to see the landscape become

Thank you

Ewan McCarthy
Creative Director
ewan@we-are-bright.com

Kate McHugh
Business Director
kate@we-are-bright.com

Michael Nicholson
Senior Designer
michael@we-are-bright.com

Bright
Third Floor
34/36 Rose Street North Lane
Edinburgh EH2 2NP
+44 (0)131 553 0920

   @designbybright

www.we-are-bright.com

Registered in Scotland SC261439

bright