

# Welcome to our Chalmerston Wind Farm Project exhibition.

Please come and meet the Brockwell team, see our plans so far and ask us questions on the development.

Your feedback is invaluable and we'd be delighted if you share your thoughts with us in person or using the online comments form at:

[www.brockwellenergy.com/projects/chalmerston-wind-farm/](http://www.brockwellenergy.com/projects/chalmerston-wind-farm/)

SCAN HERE



## Brockwell Energy

### A new force in renewable energy

Brockwell Energy was formed in 2017 to raise investment capital to develop a £1 Billion portfolio of sustainable energy projects predominantly in Scotland on and around former coal mining sites.

We are focused on a range of renewable energy technologies, including onshore wind, energy from waste, solar and battery storage.

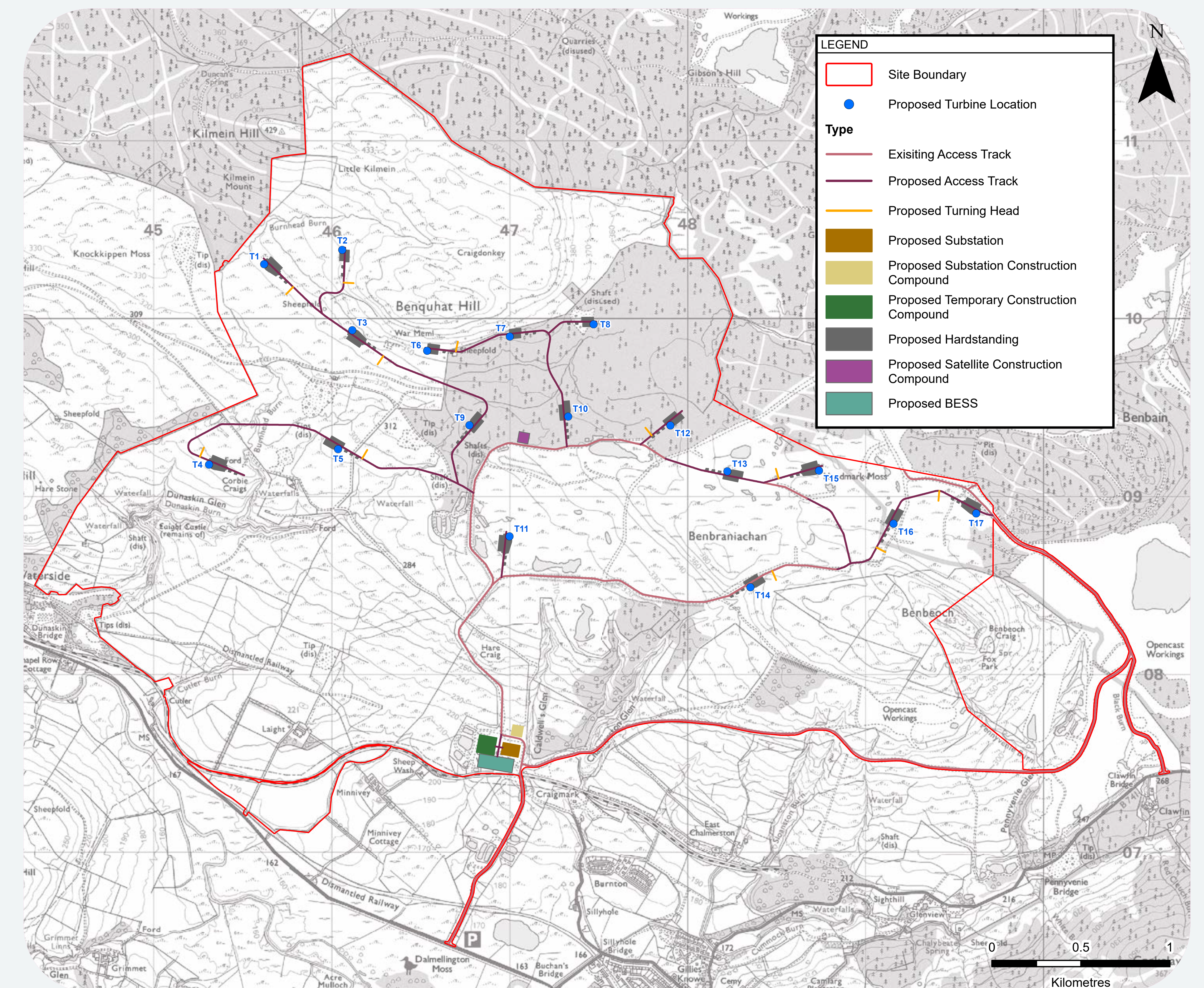
## Where We Are

Our Chalmerston project is located approximately 2.5km north of Dalmellington, on and around the site of the former Chalmertson Opencast Mine.

The site is a mix of former open cast coal mining, commercial forestry and agricultural land.

## Why We Are Here

Our feasibility assessment of the area, including a consideration of wind resource, grid connection availability, planning policy and environmental issues, shows Chalmerston has great potential as a wind energy site.



The preliminary turbine locations and main access tracks are shown on this map. The key components of the proposals are:

- Up to 17 wind turbines with a maximum tip height of 200 metres, delivering up to 80MW of renewable energy to the grid;
- Turbine foundations;
- Crane hardstandings;
- A site entrance for each section of the proposed development;
- Internal and private access road network;
- Watercourse crossings;
- On-site borrow pit(s) depending on the suitability of site-won materials to provide aggregate for the construction of the development;
- Transformers and underground cables;
- Onsite substation / switchgear building;
- One or more temporary construction compounds;
- The locations of these components are still being developed.

# Caring for the environment...

Before applying for consent, a full and detailed environmental impact assessment (EIA) of the proposed development will be conducted by independent consultants SLR.

**The assessment results will be presented in an EIA report and submitted to the Scottish Government as part of the planning application. This report (and all other project documentation) will be available to the public via the Energy Consents Unit website.**

We are currently holding early public exhibitions to present the proposals to the local community and listen to your feedback and views on the project.



**The EIA process involves baseline surveys and consultation to:**

- Understand the environmental baseline conditions at the site;
- Quantify the environmental impacts of the development;
- Identify methods to avoid, minimise or manage any potential effects;
- Identify potential opportunities to enhance the environment.
- Develop a wind farm design which takes account of environmental constraints;

**The EIA Report will assess the potential effects on:**

- Landscape and visual;
- Cultural heritage and archaeology;
- Noise;
- Ecology;
- Ornithology
- Geology, hydrology and hydrogeology;
- Peat;
- Access, traffic and transport;
- Forestry;
- Aviation and radar;
- Other considerations such as telecommunications and shadow flicker

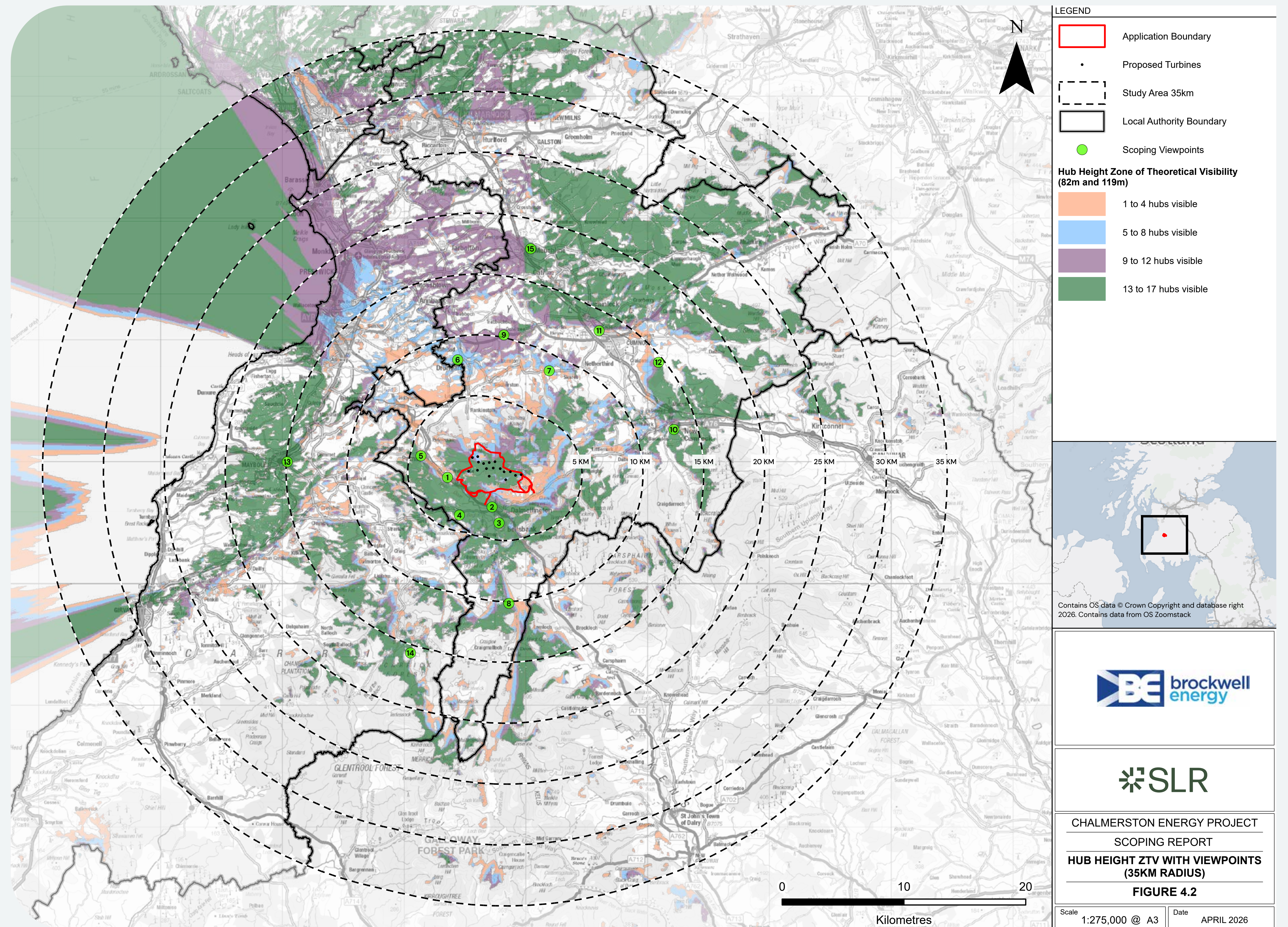
A standalone Socio-Economics, Tourism, Recreation & Land Use Report will be submitted to the Scottish Government alongside the EIA Report and other planning application documents.

# Landscape and Visual Impact Assessment

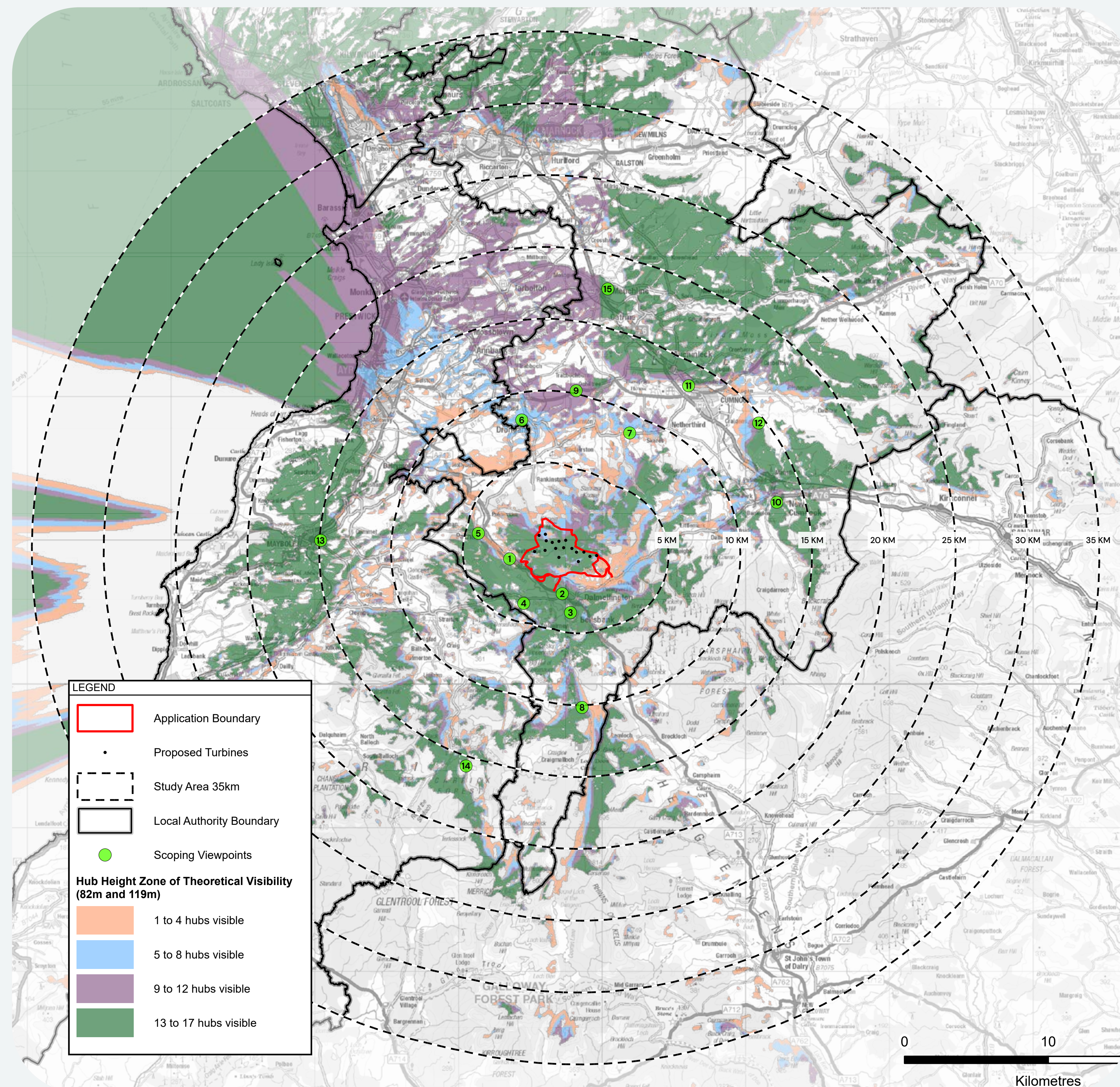
The Zone of Theoretical Visibility (ZTV) plan on the right shows the locations, within 35 km of the site boundary, where wind turbines would theoretically be visible.

It is important to note that the ZTV only considers topography, principal woodlands and buildings, and therefore provides a conservative view of visual impact.

The ZTV is used by our landscape architects to understand where visual impact may be experienced to allow appropriate assessments to be undertaken.



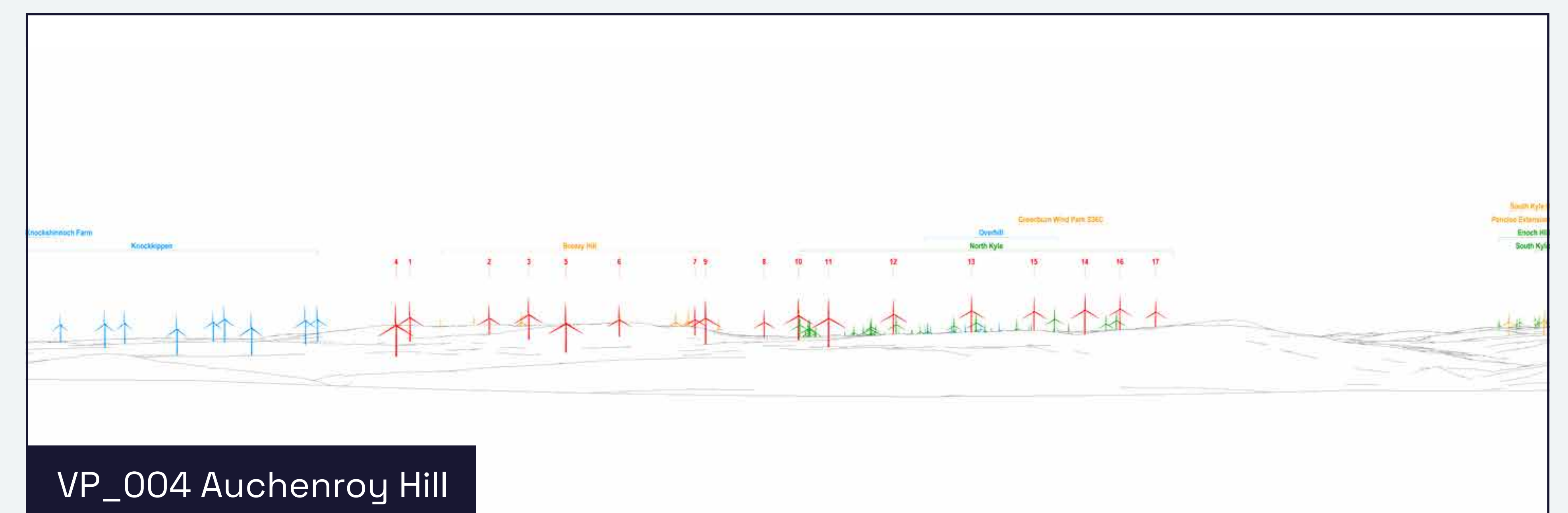
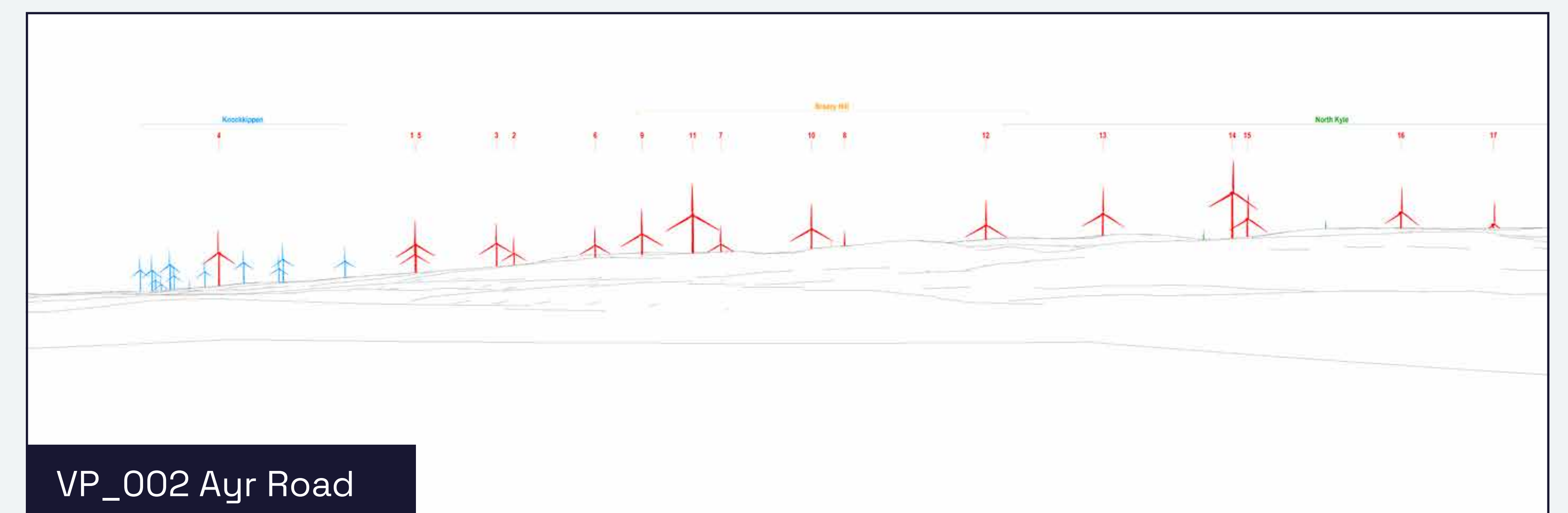
# Wireline Viewpoints



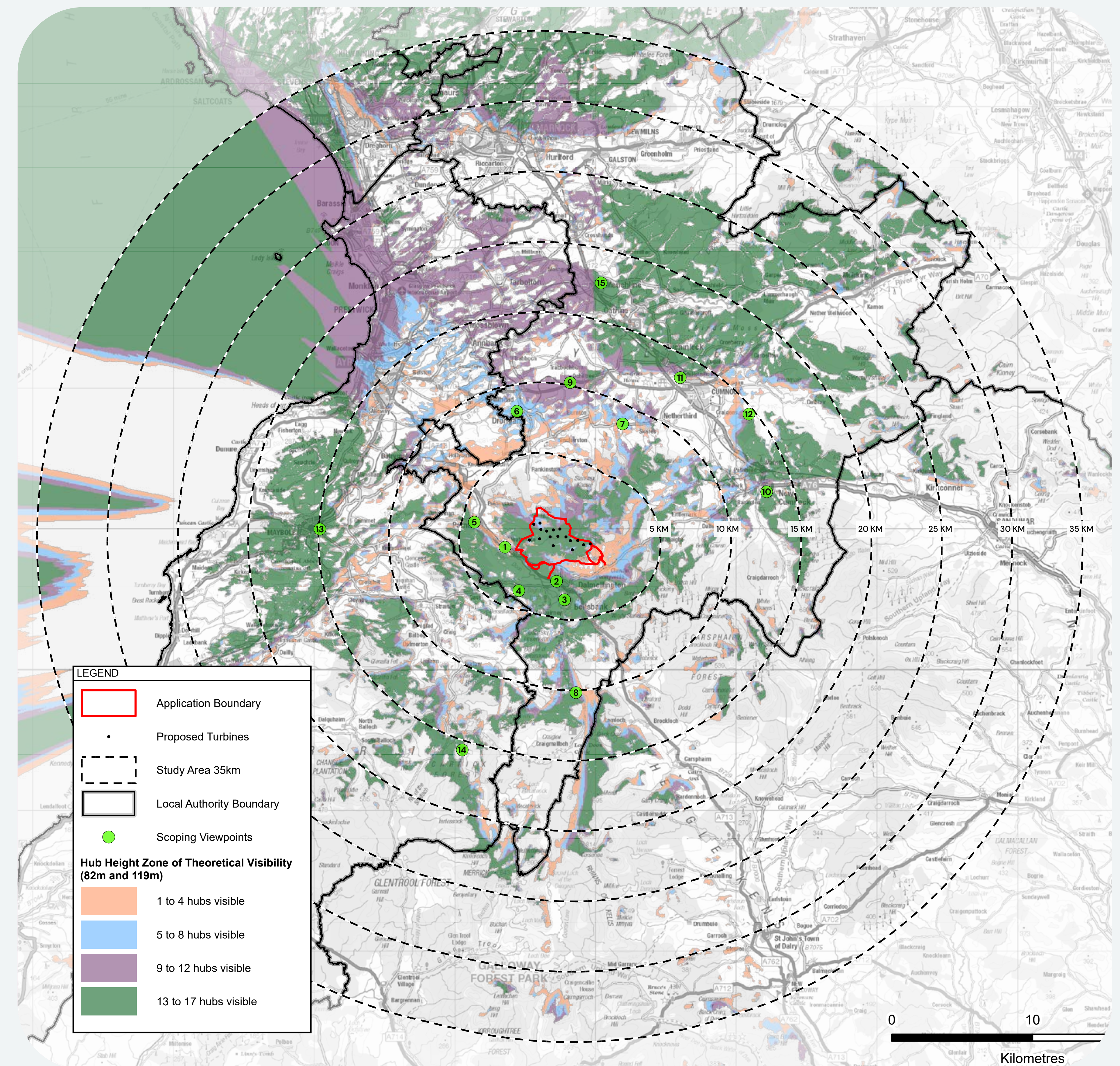
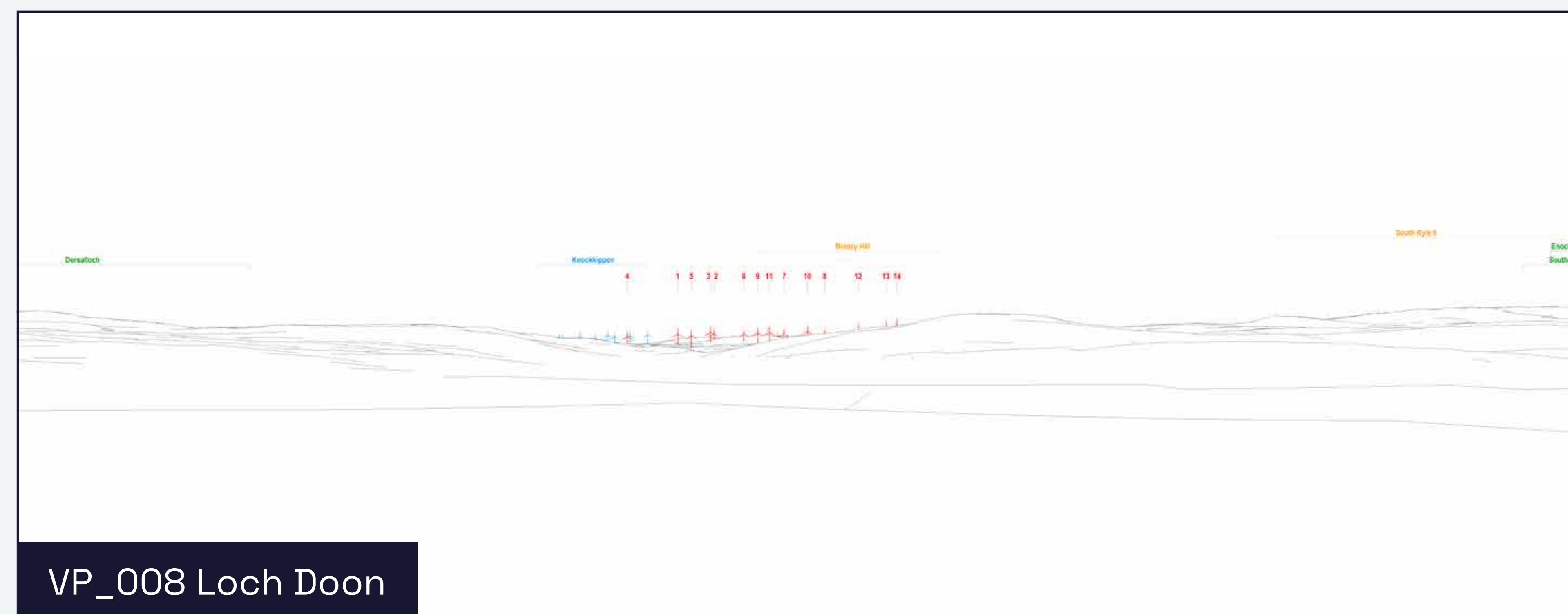
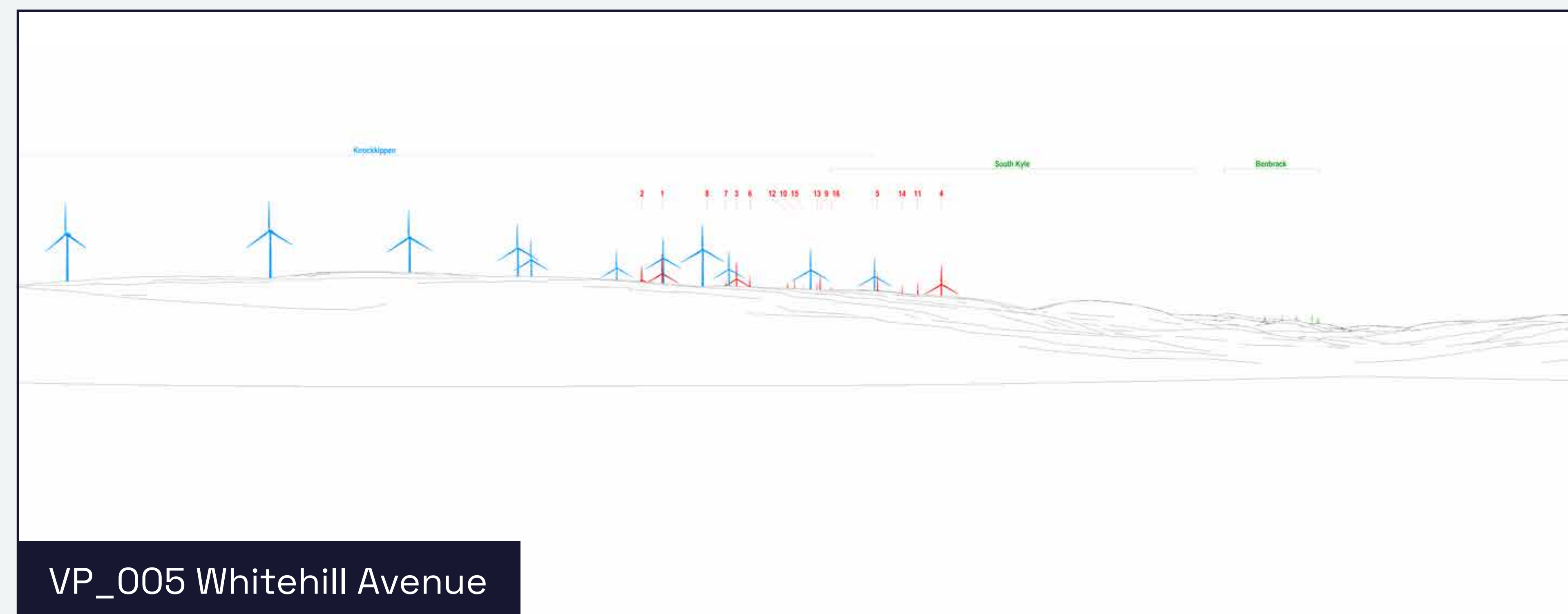
After key viewpoints are identified within the ZTV, wireline point of view images are generated to understand how the turbines will appear on the horizon once built.

Like the ZTV, these images do not consider any screening from vegetation or the built environment.

**Within the presented wirelines, Chalmerston turbines are shown in red**



# Wireline Viewpoints



# Site Regeneration

## A New Green Vision for an Industrial Past.

**Decades of opencast mining in the area, with limited restoration, have left parts of the landscape damaged, with limited greenery, trees and wildlife.**

The Chalmerston Wind Farm will provide further restoration to the former Chalmerston opencast mining areas, building on the positive regeneration works delivered through Brockwell Energy's successful North Kyle project. The project will also complement the wider regeneration plans being developed for the neighbouring Breezy Hill site, helping to restore and enhance the local landscape for the long term.

**Community support is key to the success of any development, and we recognise that the Chalmerston Wind farm project should bring meaningful, long-lasting benefits to the local area and local communities.**

Brockwell and the Chalmerston Wind farm project will deliver, in collaboration with the 9 Community Council Group (9CCG):

- Further land regeneration, ecological improvement and opportunities to highlight and enhance the site's natural environment;
- Leveraging local heritage, recreation assets and visitor attractions to enhance the visitor experience and support the local economy;
- Creating stronger links between the site and the area's rich industrial and mining heritage;
- Long term community benefit funding to support locally identified projects and priorities.

We are also interested in your ideas for how the Chalmerston Wind Farm can benefit and enhance your area.



## Community Benefits

### Supporting Local and Wider Communities.

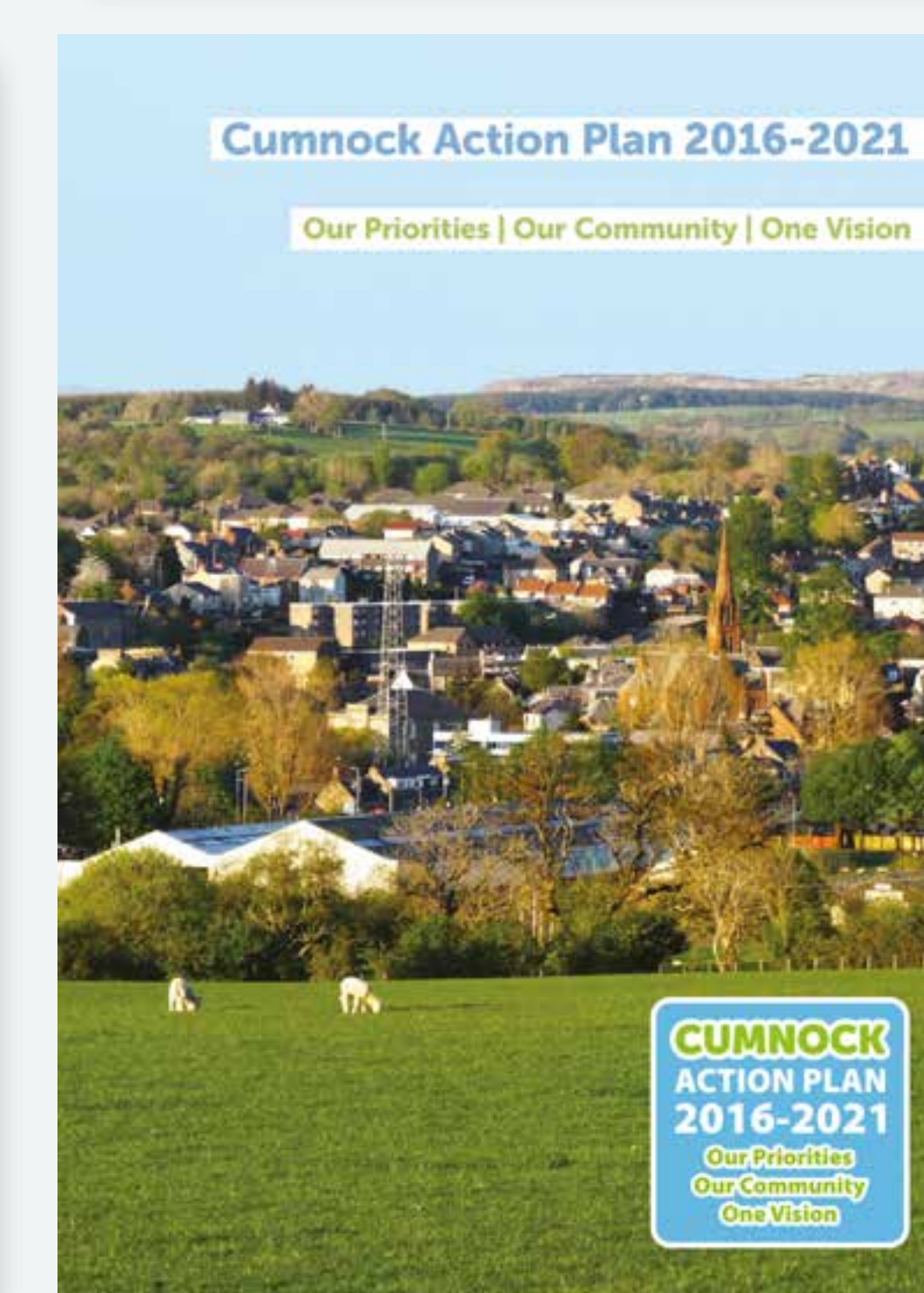
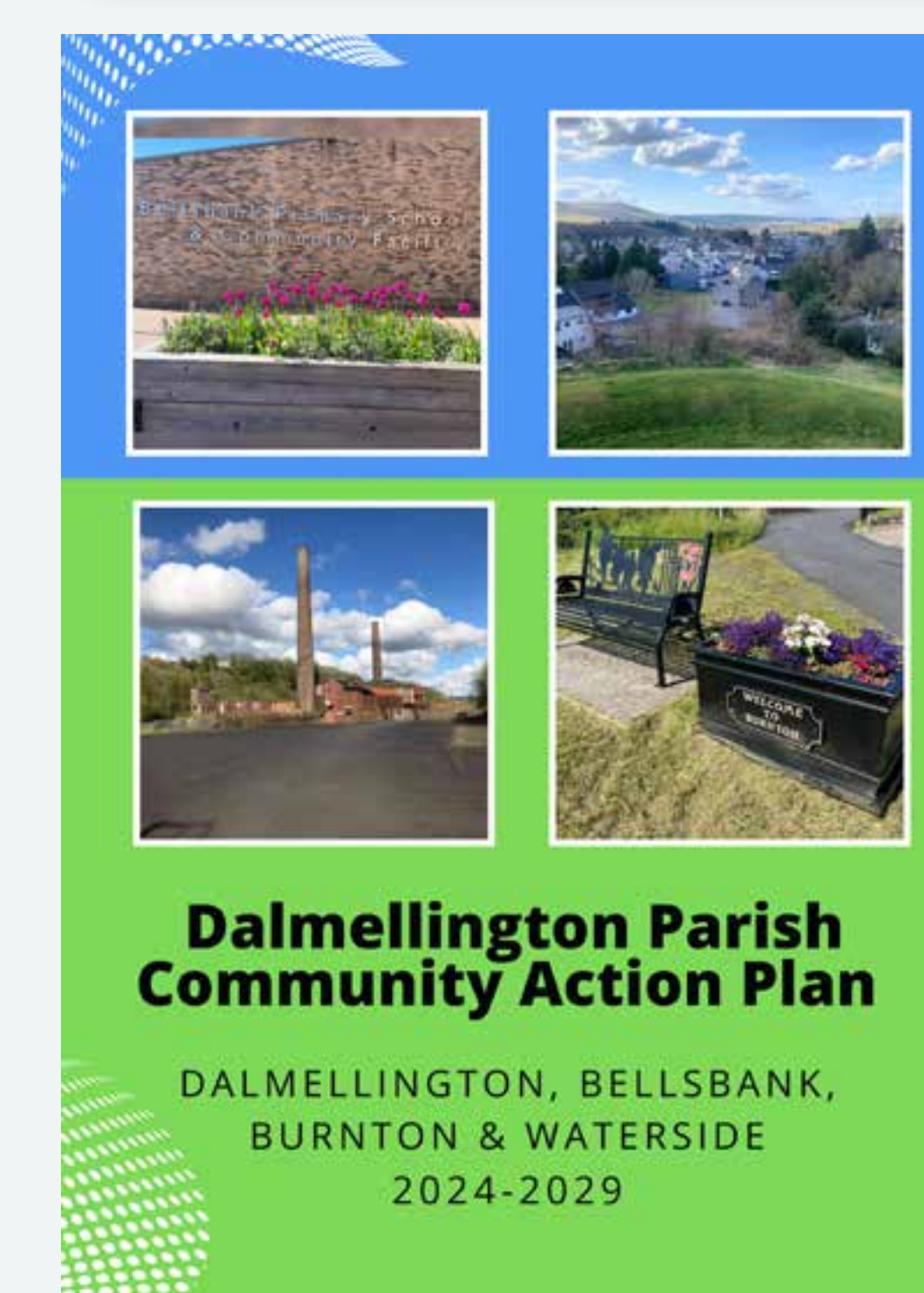
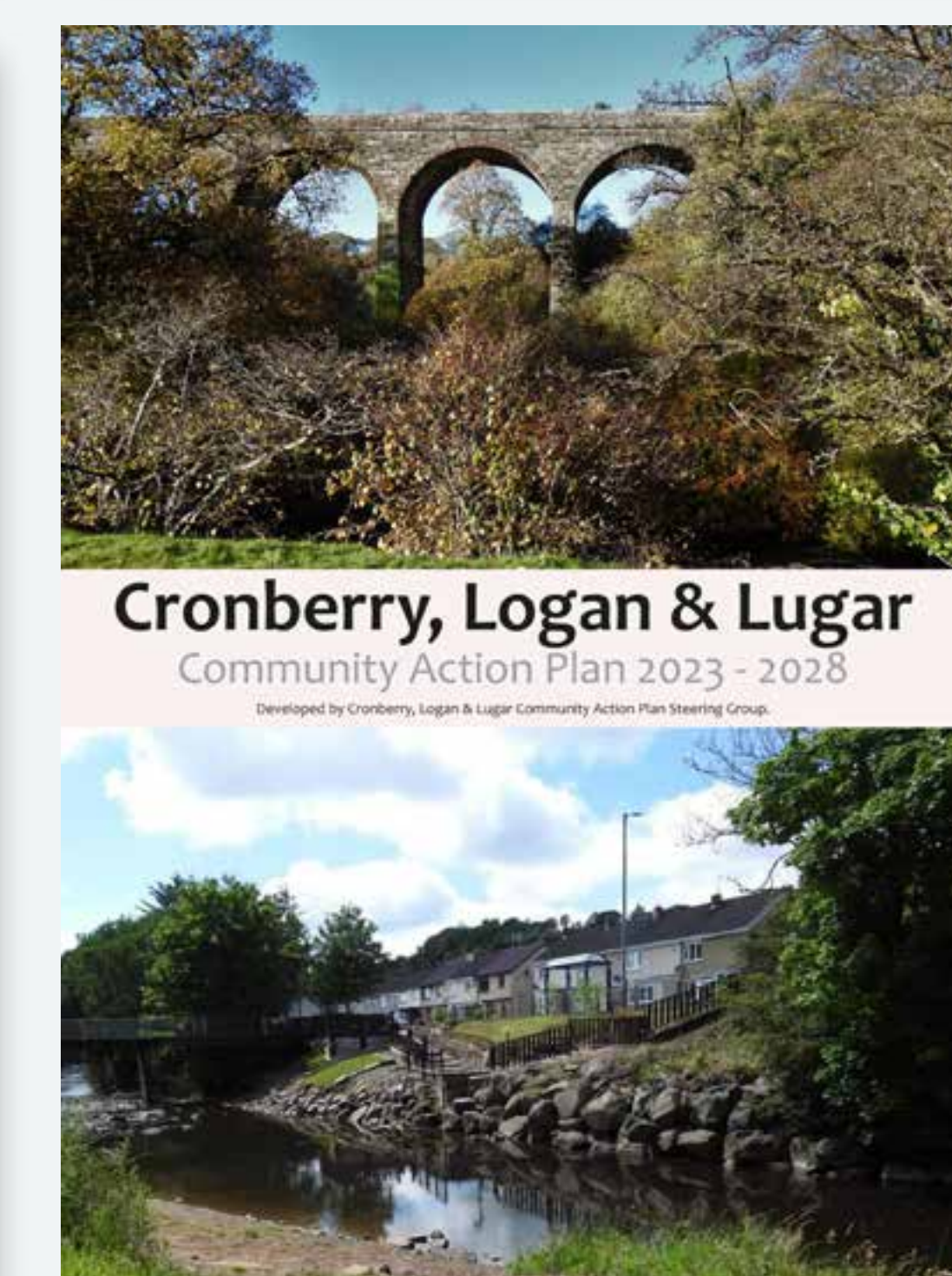
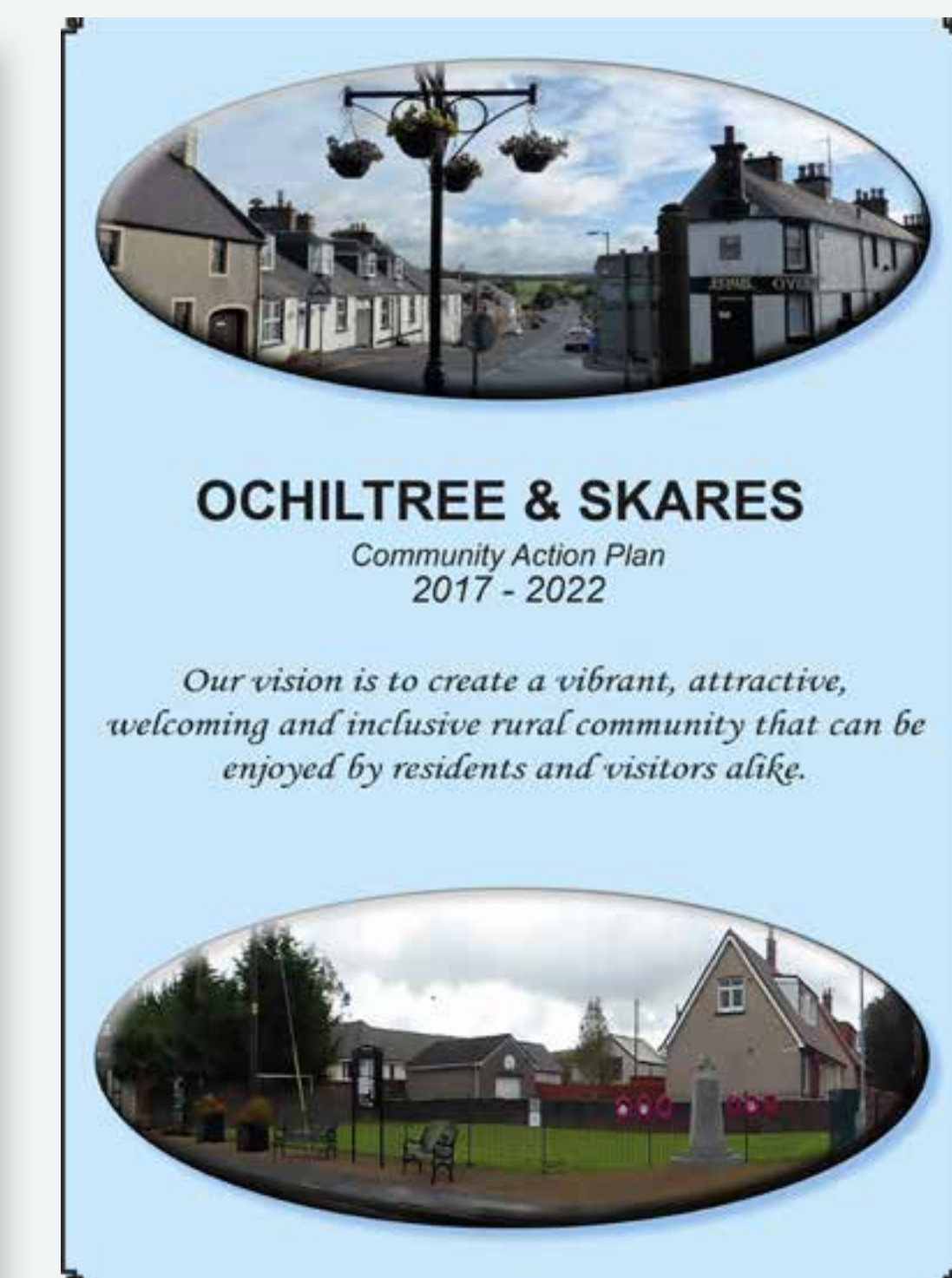
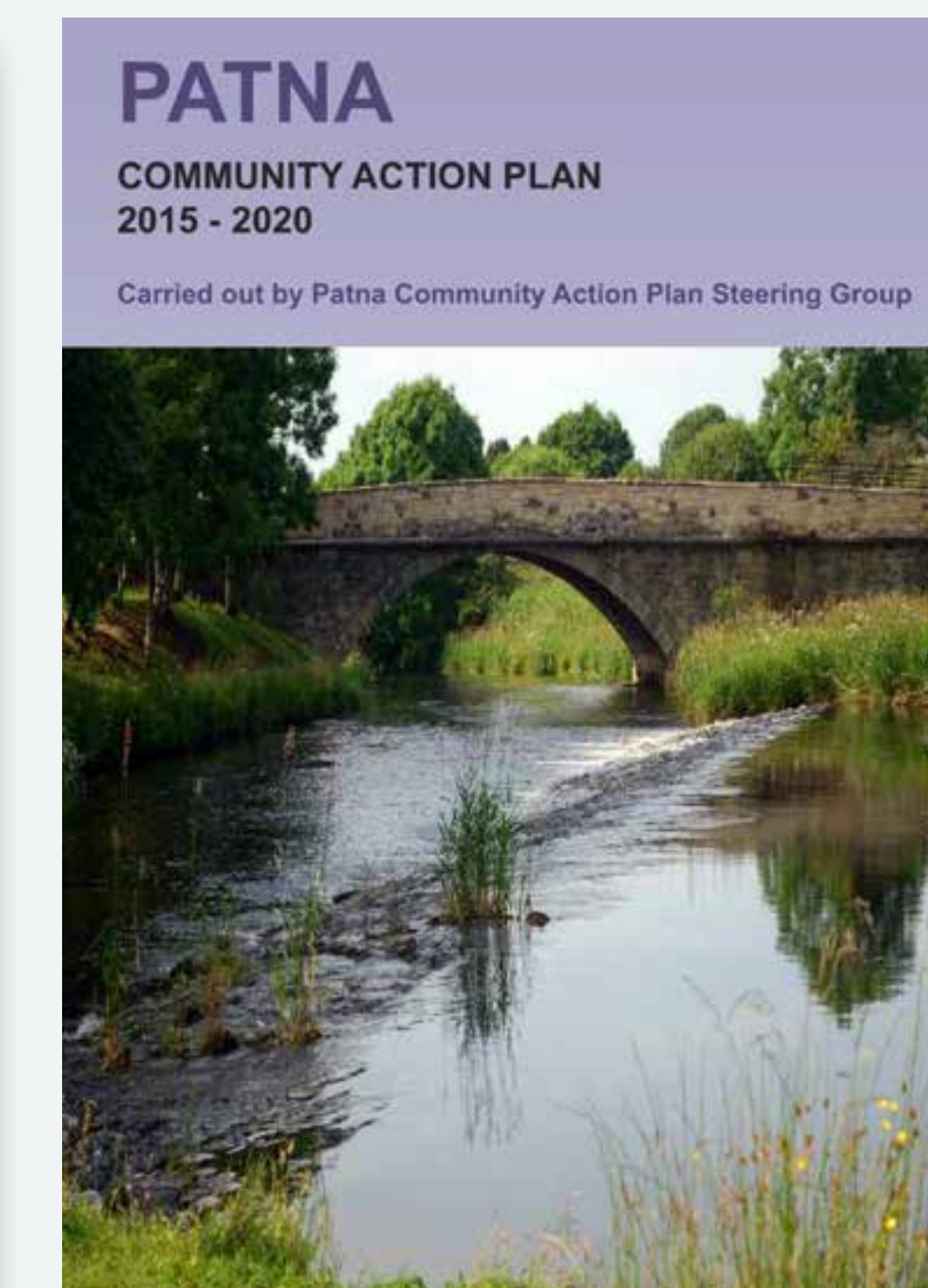
In 2023 Brockwell was instrumental in helping create the 9CCG, a group representing the nine communities local to wind development in and around the Dalmellington Area.

The group was formed to coordinate the distribution of community benefit funds allocated from newly consented and future wind farm developments.

In its short history the 9CCG has already funded multiple projects in the local community, including local football club refurbishments, solar panel installation, community gardens, and has even provided a shed for the Cumnock and District Men's Shed (an organisation which advances the social needs, health and wellbeing of men of all ages).

Over its 40 year lifespan, the Chalmerston Wind Farm Project will contribute over £16million to the 9CCG, helping to ensure long term support for the communities the group represents.

We are also interested in your ideas for how the Chalmerston Wind Farm can benefit and enhance your area.



# Linking Heritage and Ecology to Drive Visitor Growth

## Building on Existing Heritage and Tourism Investment Across the Doon Valley.

The Doon Valley Railway already serves as an important heritage attraction within Ayrshire, preserving the area's industrial and railway history while attracting visitors to Dunaskin and the surrounding area.

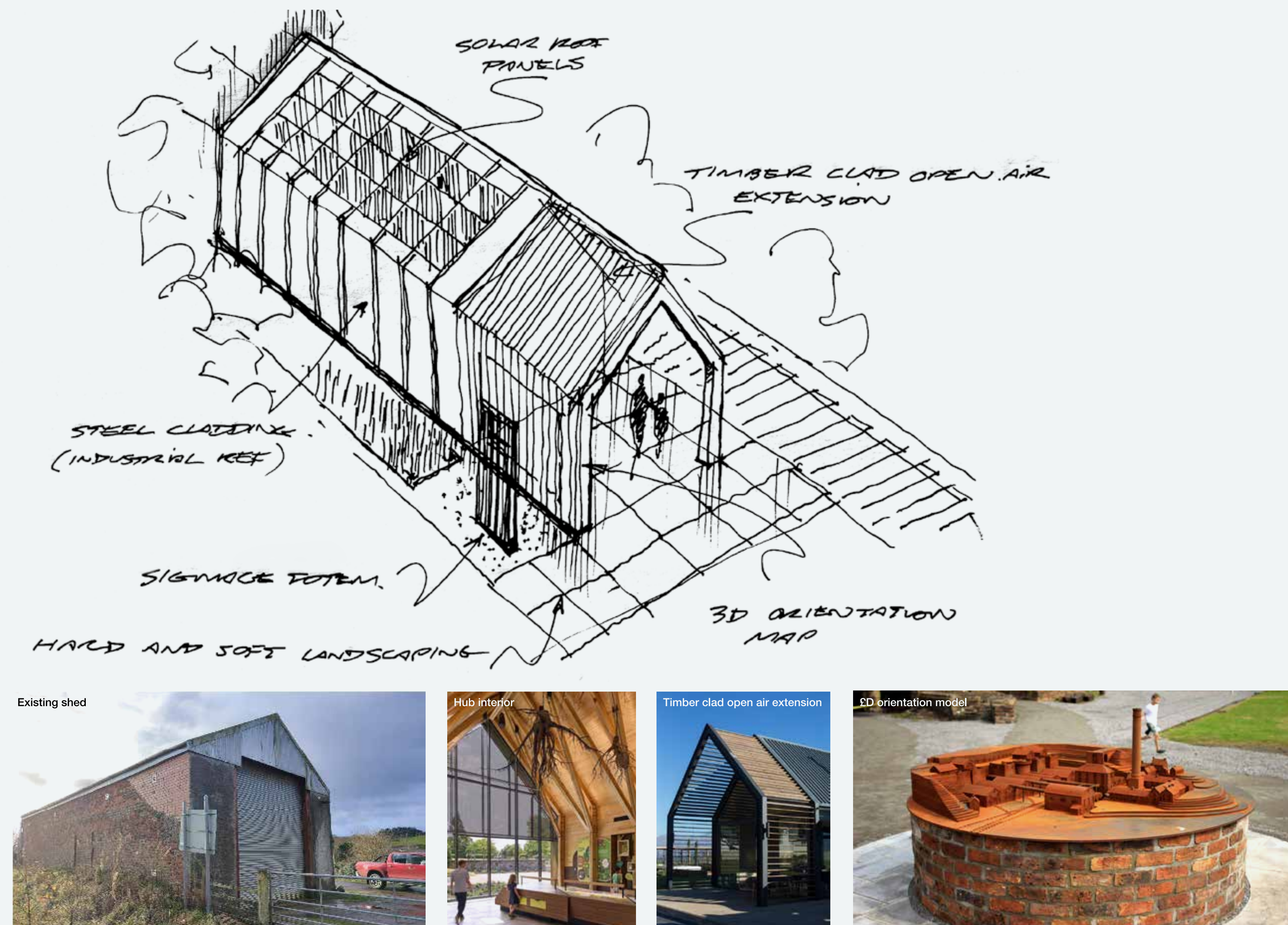
Building on this foundation, the community has identified a number of concepts that the wind farm could help facilitate, unlocking further tourism, recreation and economic opportunities across the Doon Valley by connecting local heritage assets, visitor attractions and outdoor recreation destinations.

**Concept 1** focuses on strengthening the local heritage railway network through potential extensions towards Patna and Dalmellington, creating improved connections between communities and visitor destinations.

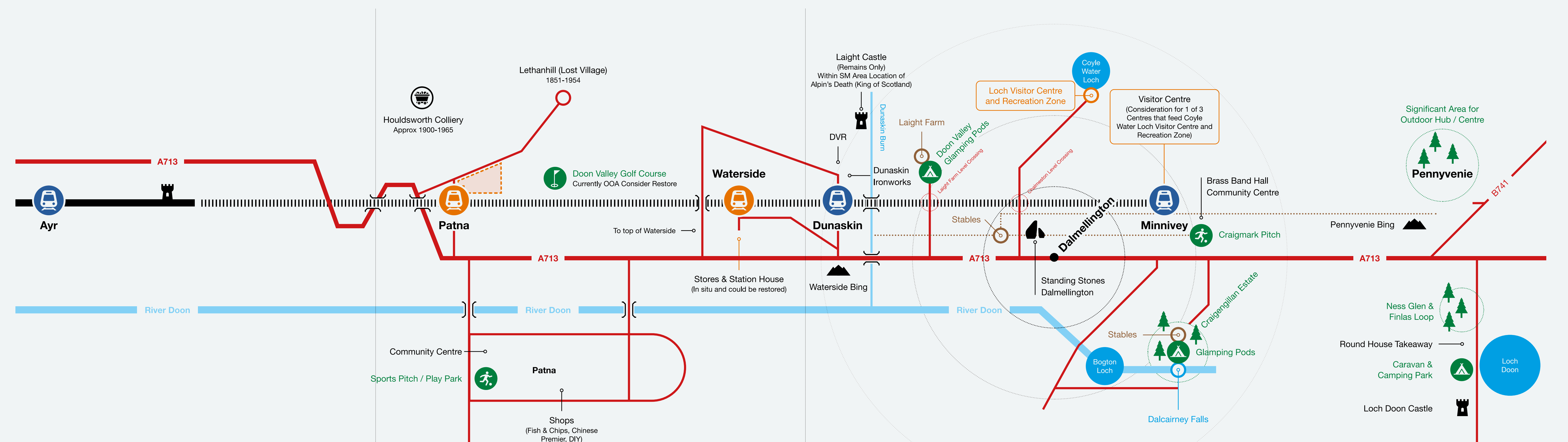
**Concept 2** explores opportunities to link the railway with the proposed visitor and activity centre being developed through the neighbouring Breezy Hill Wind Farm project, creating a complementary tourism offering for the wider area.

**Concept 3** considers the long term opportunity of reconnecting the Doon Valley to Ayr and the national rail network, enabling direct heritage rail services, improving sustainable transport links and supporting wider economic growth and tourism development across the region.

**Concept 4** focuses on improving access to the extensive recreational opportunities available within North Kyle Forest, helping to connect visitors with walking, cycling, outdoor recreation and the area's natural environment.



**Concept 5** an orientation hub and cafe at Patna could be designed to provide a welcoming and easy to navigate visitor experience.



# Thank You!

Thank you for taking the time to speak to us and learn more about Brockwell and the Chalmerston Wind Farm Project.

**We hope this exhibition has given you a deeper insight into our project and its possible benefits. We're here to answer your questions and listen to your feedback, and we value your views and opinions.**

Please feel free to share your thoughts using the notes or comments cards available, or via our website.

## What's Next?

- We welcome your feedback on our initial proposal to help us refine the details of the Chalmerston Wind Farm Project.
- We will then finalise our design and technical assessments to allow us to submit the planning application for consent in Autumn 2026.
- After the application is submitted to the Scottish Ministers, the Scottish Government will undertake its own consultation process, when the public will be invited to make formal comments on the proposal.

---

## Contact Us

Keep up to date with Chalmerston Wind Farm news and provide comment via:

**Our website:** [www.brockwellenergy.com/projects/chalmerston-wind-farm/](http://www.brockwellenergy.com/projects/chalmerston-wind-farm/)

**Chalmerston Wind Farm contact number for feedback and comments:** 0131 370 0000

**By email to:** [chalmerston@brockwellenergy.co.uk](mailto:chalmerston@brockwellenergy.co.uk)

**By post:** Brockwell Energy, The Eagle Building – Third Floor, 19 Rose Street, Edinburgh EH2 2PR

